



UK OFFSHORE WIND SUPPLY CHAIN SPOTLIGHT

Showcasing UK Innovation & Excellence

EDINBURGH
12.12.23



WELCOME

UK Offshore Wind Supply Chain Spotlight Breakout Stream 3



UP NEXT – BREAKOUT STREAM 3



11.00 – 11.45:

Innovation Funding in start-ups within the Offshore Renewable Sector – Opportunities and Barriers



CHAIR: Ravneet Kaur

Senior Technology Acceleration
Manager
ORE Catapult



Jonathan Bryers

Managing Partner
350 Investment Partners



Johnathan Stone

Investment Director,
Renewables & Power | Hydrogen
bp Ventures



Andy McAllister

Assistant Director – Advisory
Corporate Finance
Deloitte





PLEASE MAKE YOUR WAY TO THE PENTLAND SUITE NOW

Up Next – Session 3
11.45 – 12.30

WELCOME BACK

UK Offshore Wind Supply Chain Spotlight Breakout Stream 3



UP NEXT – BREAKOUT STREAM 3



13.15 – 14.00:

Ready for Investment

Napkin Innovation

Jacqueline Morrison



Cutting the cost of offshore jacket installation

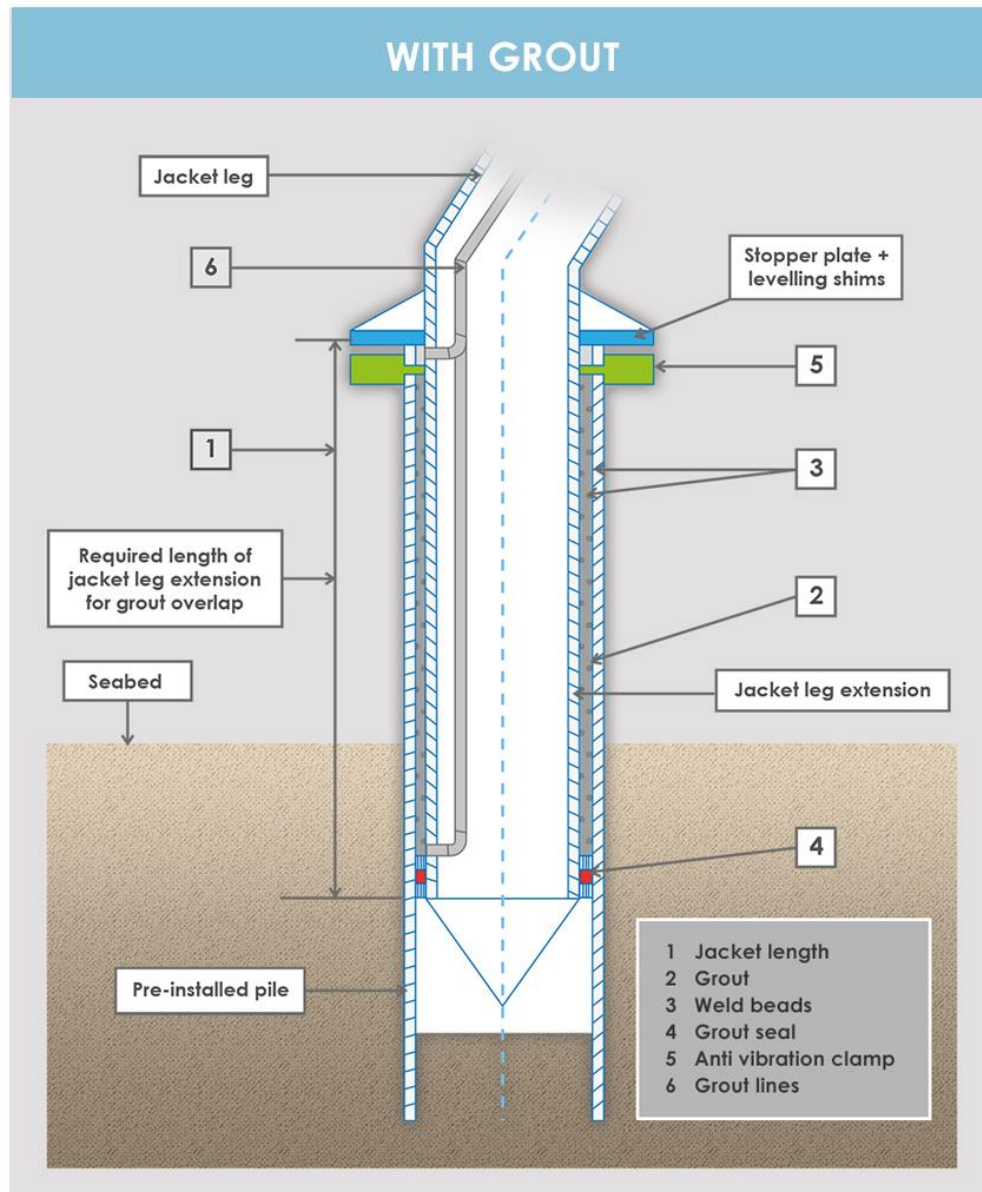
Jacqueline Morrison, Founder/CEO



Funded by
Innovate UK

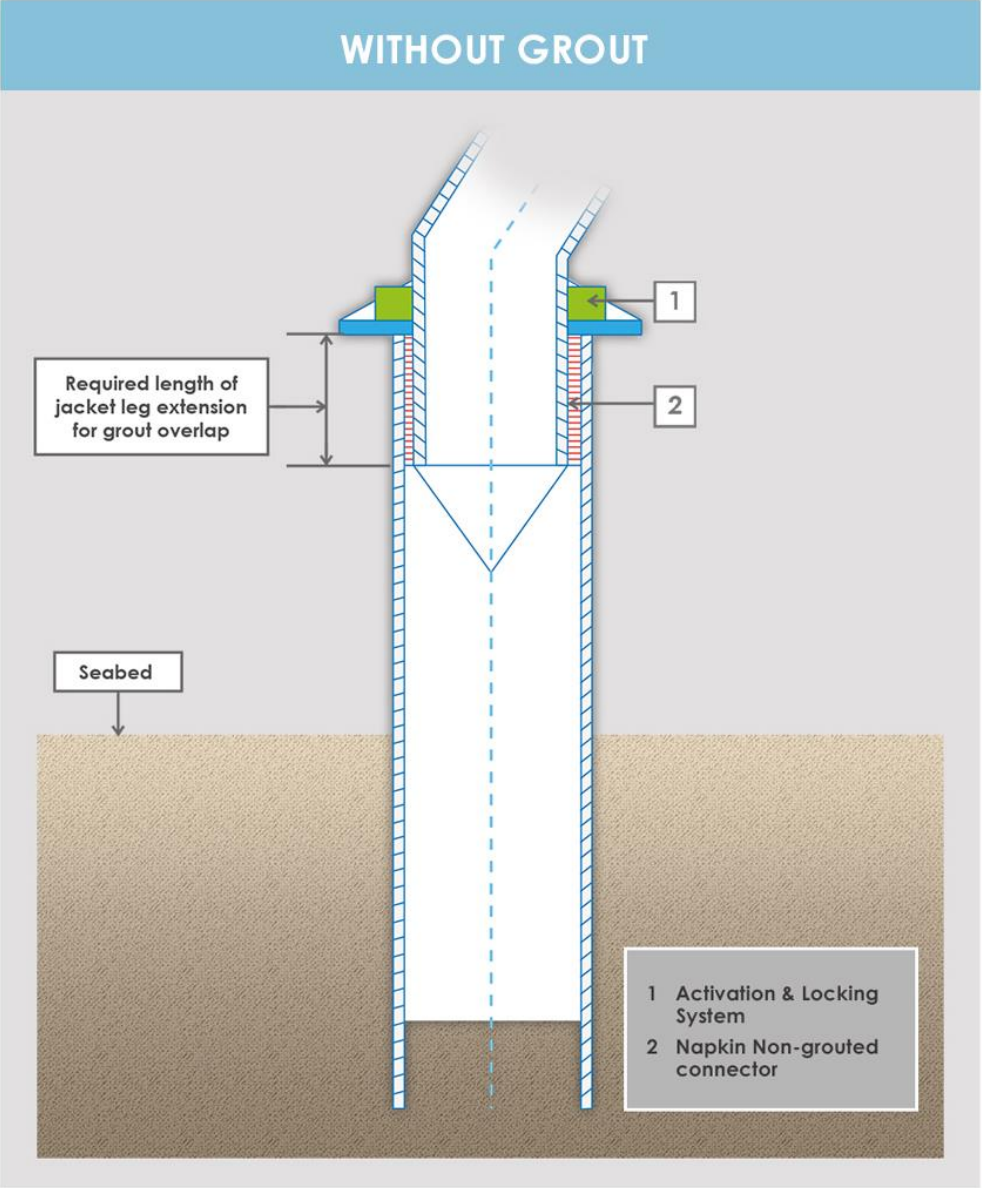


This SME Innovation Project has received cascade funding from the European Union's Horizon 2020 research and innovation programme under Grant Agreement No 101005541.

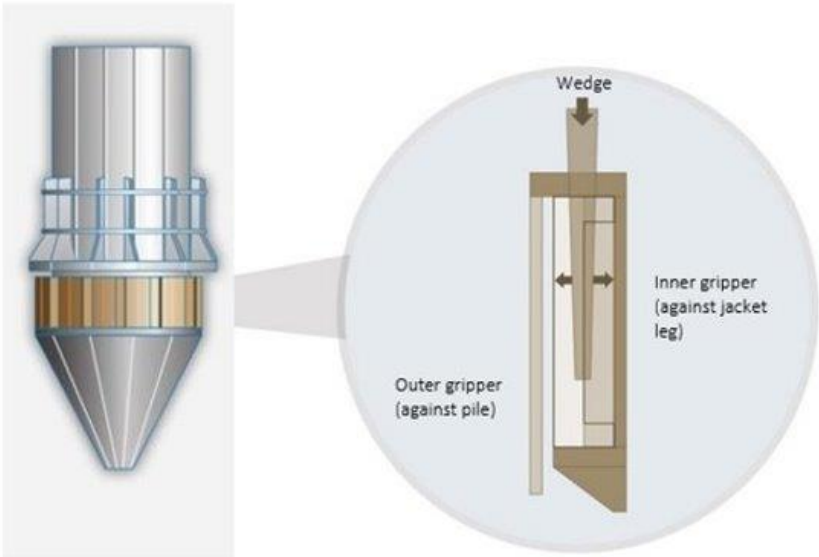


Jacket installation **with** a grouted jacket-pile connection

- Time-consuming
- Expensive
- Difficult to do
 - Weather dependent
 - Back up vessels required
 - Early Age Cycling
 - Scale - is grout nearing limit of capability ?
 - Cement production environmentally damaging



Jacket installation **without** a grouted connection






16 devices are placed between the jacket leg and pile.

Each device consists an outer gripper, an inner gripper and a wedge.

When the wedge is pushed down, the outer gripper is pushed out.

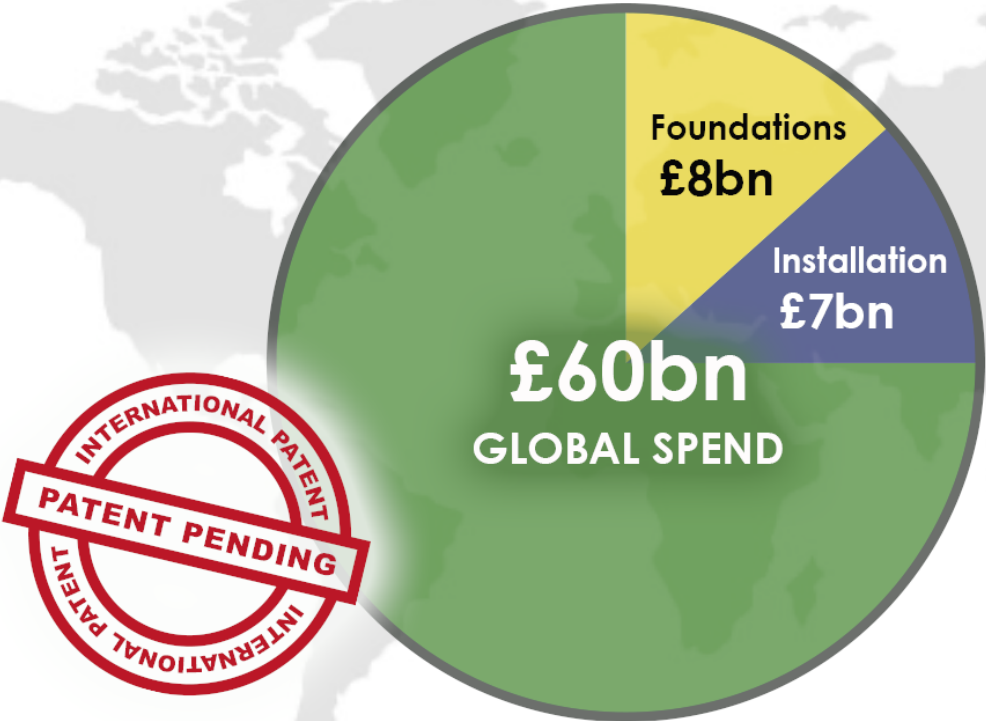
Benefits

| | | |
|--|--|--|
|  <p>50 Days Saving installation time</p> |  <p>£14m Saving installation costs</p> |  <p>33% Reduced CO₂ emissions</p> |
| <p>Reduced reliance weather windows</p> <p>Increased productivity</p> | <p>Fewer vessels</p> <p>Reduced risk</p> | <p>Reduced environmental impact</p> <p>Sustainable / Circular design</p> |



Across 100 turbines

Global opportunity

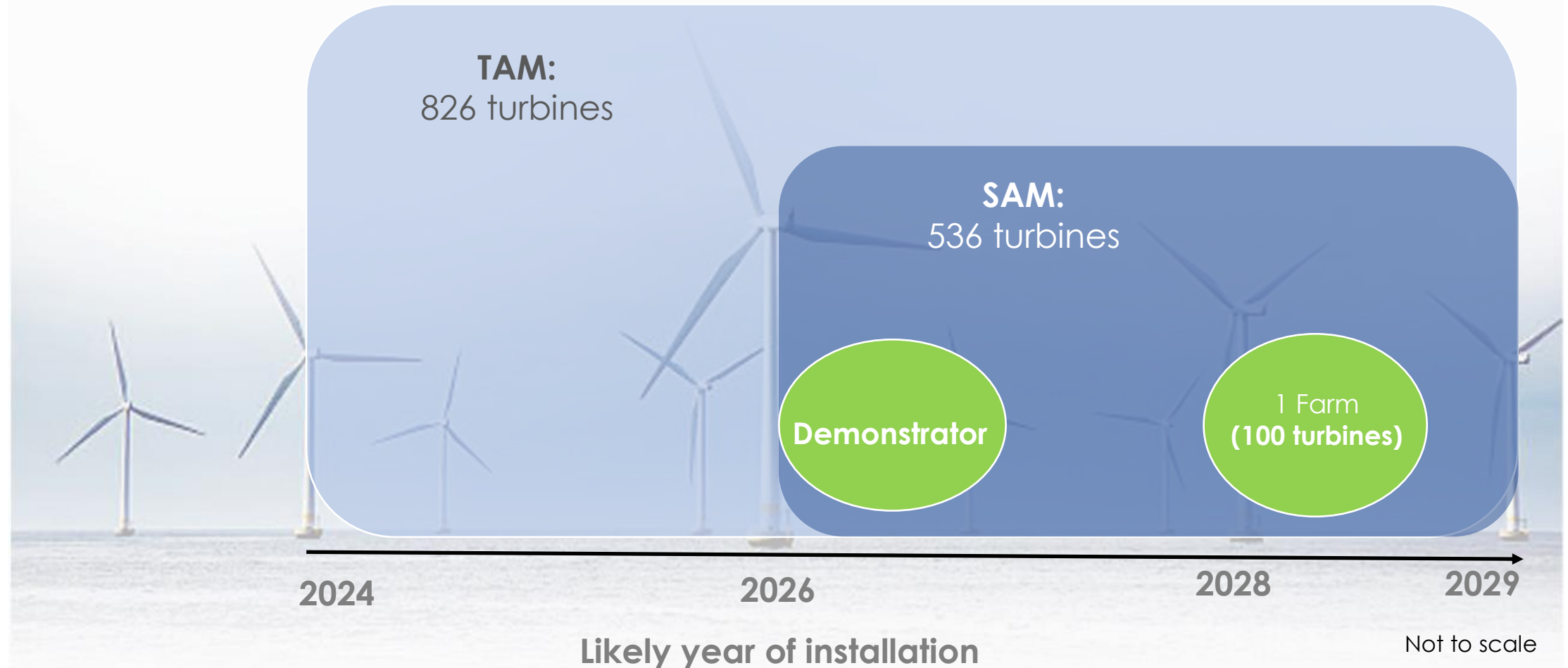


| 2030 Global Offshore wind investment (£M's) | |
|---|---------------|
| Blades | 3,365 |
| Nacelle | 25,048 |
| Tower | 2,243 |
| Foundations | 8,214 |
| Electrical | 8,100 |
| Installation | 6,842 |
| Other Capex | 5,228 |
| TOTAL CAPEX | 59,040 |

Source: Offshore Renewable Energy Catapult, 2023

Initial market

UK Jacket Foundations by 2030



The Team

Napkin Innovation



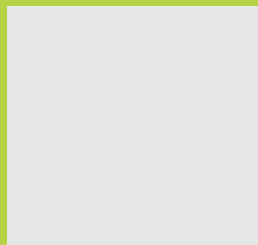
Jacqueline Morrison
Founder, CEO

Funding &
collaboration



Trevor Hodgson
CTO

Technical Authority -
offshore foundations &
expert witness



Project engineer

TBC
Project
management &
technical oversight

Industry support



Kent plc

Industry Expertise



**Offshore Renewable
Energy Catapult**

Industry Expertise



Dr. Fiona Sillers
Strathclyde University

Advanced materials &
testing

External advisors/mentors



Rob Sheldon
Package Manager,
SSE Renewables

Commercial, finance &
project management



Zoe Barnes
Partner, Everoze

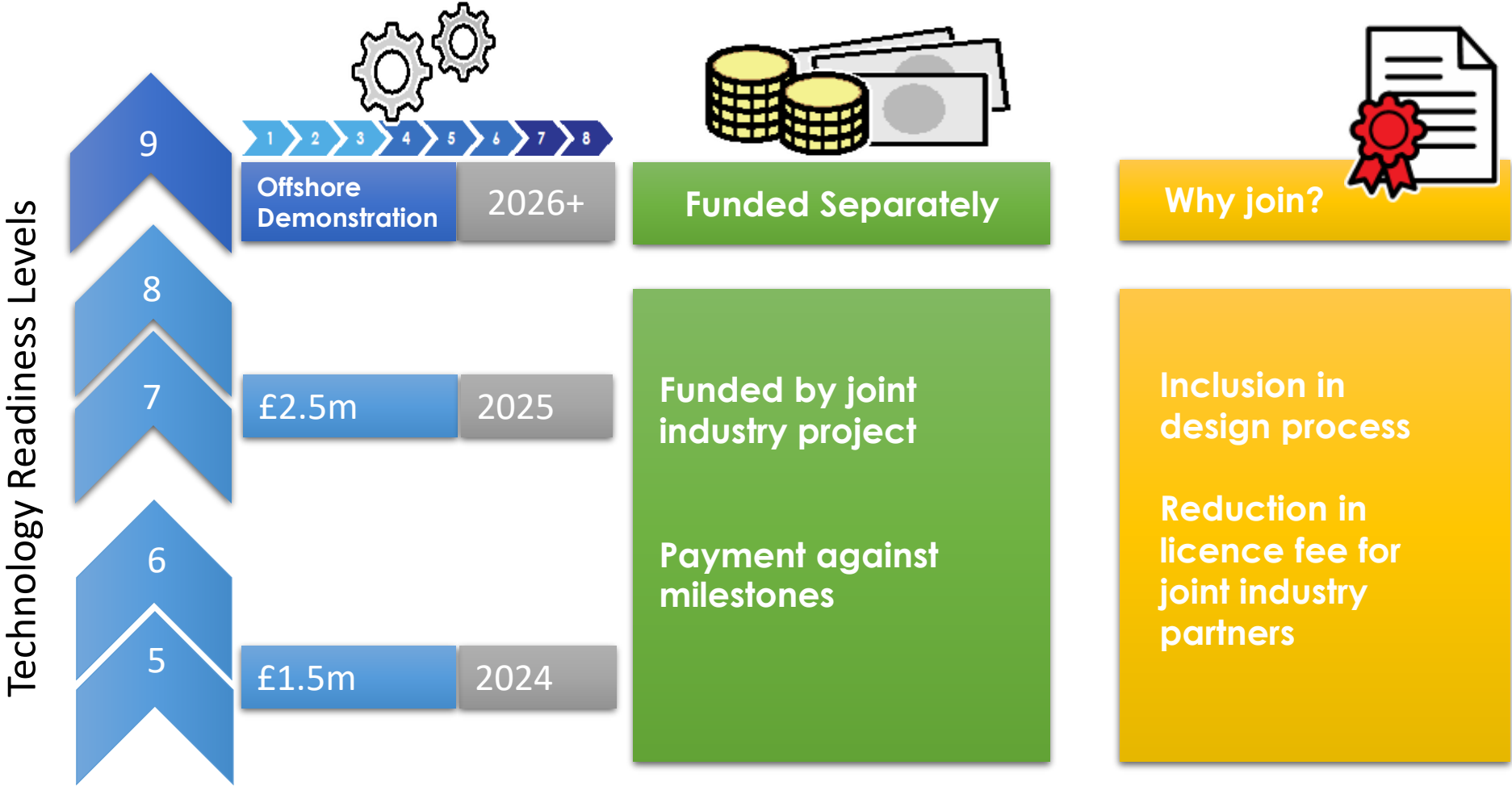
Supply chain
development,
governance & innovation



Caroline Roberts
MD, Astimar

Chartered engineer,
product development &
certification

Route to market: joint industry project



Our ask:

Wind developers,
installers and
fabricators to
fund a joint
industry project



JACQUELINE MORRISON

0753 170 9310

[LinkedIn/jacquelinemorrison](https://www.linkedin.com/in/jacquelinemorrison)

jacqueline@napkininnovation.co.uk

TRL 5 - TRL 6 = £1.5m
TRL 7 - TRL 8 = £2.5m

Total = £4m

Pays for itself
ONE FARM!



Verlume
Andy Martin

verlume



CONFIDENTIAL

Co-located energy storage for offshore infrastructure



CONTACT DETAILS

Andy Martin / CCO andy.martin@verlume.world

verlume

www.verlume.world



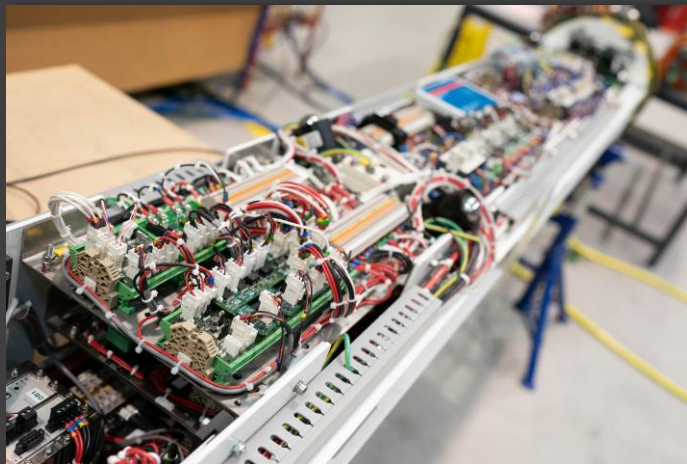
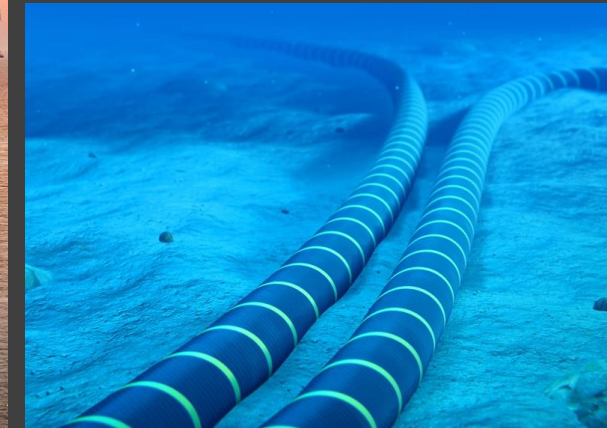
Offshore energy infrastructure needs co-located energy storage

Verlume is the market-leader in seabed battery storage

Verlume facilitates the **uptake and optimisation of offshore renewable power sources** by stabilising intermittent power

Verlume **designs, assembles & tests** complete energy management and battery systems

Verlume is energy storage **medium agnostic**. Lithium-ion batteries are today's leading storage medium, our goal is to work with tomorrow's technology



Major opportunity in subsea storage

Applications including offshore monitoring thru to charging Autonomous Underwater Vehicles (AUVs)

Addressing energy transition challenges

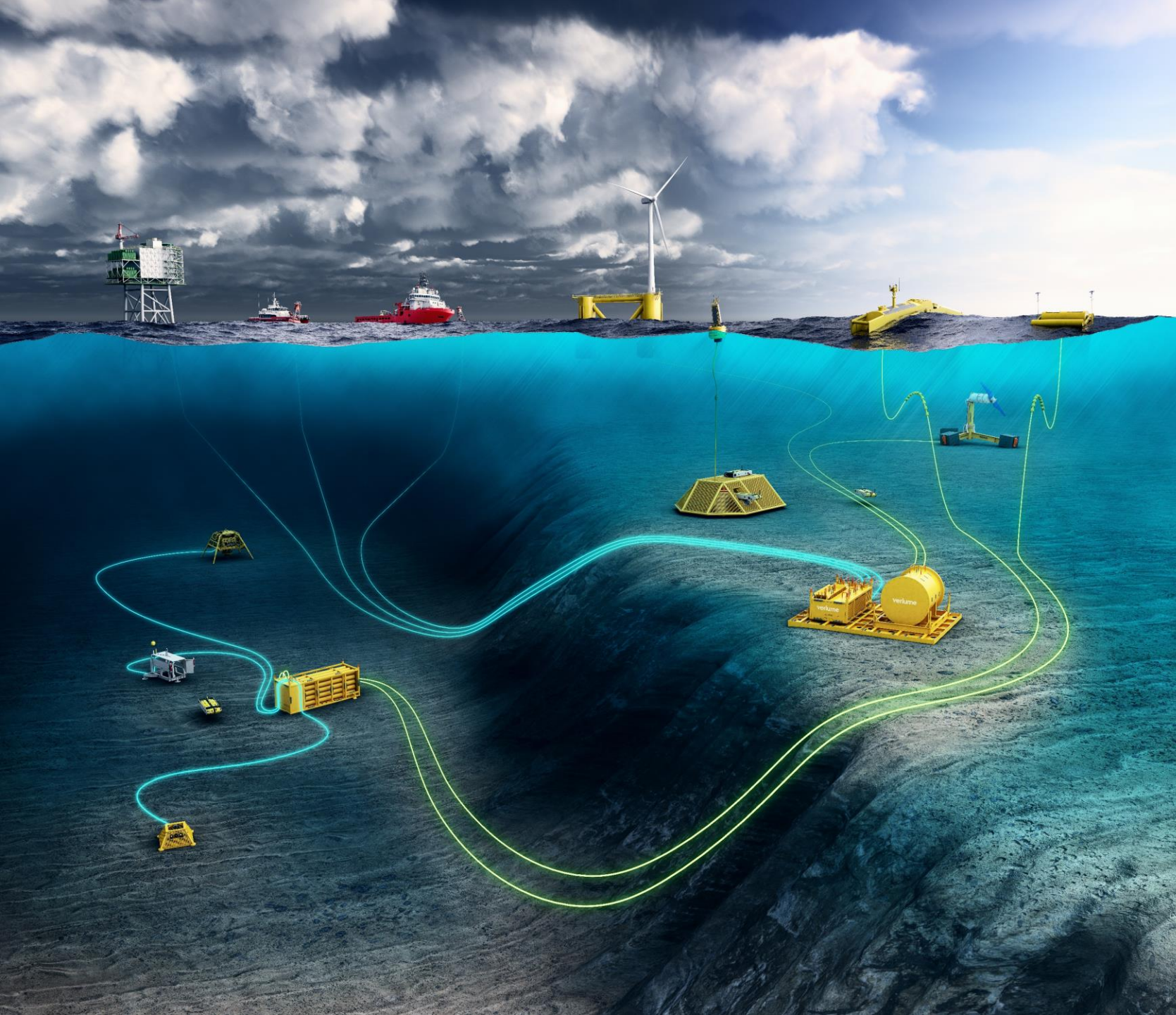
Enables efficient wind peak shaving, curtailment reduction, and contribution to the development of hydrogen solutions, positioning Verlume as a key player in the evolving energy landscape

Market leader

Verlume's Axonn intelligent energy management system offering is the most comprehensive product on the market, positioning us as a leader in the industry

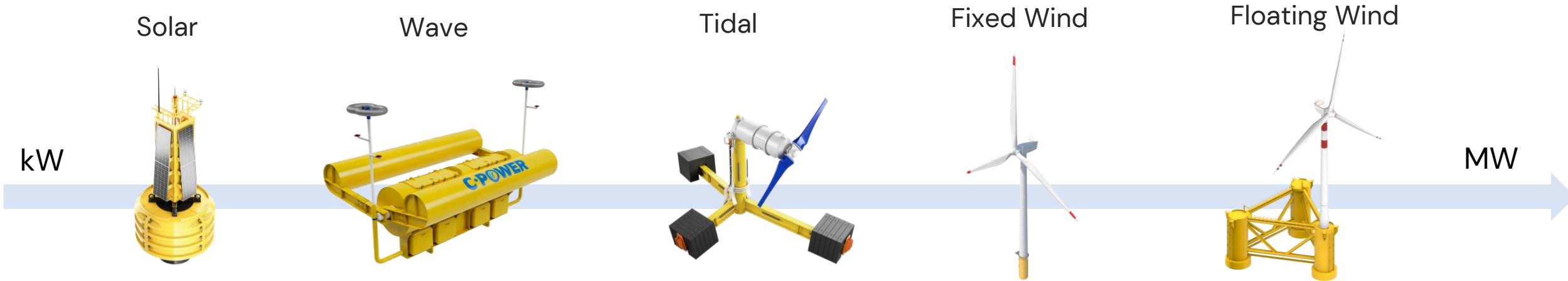
20,000 tonnes CO₂

Estimated savings by 2030, by displacing carbon-intensive energy sources in various applications

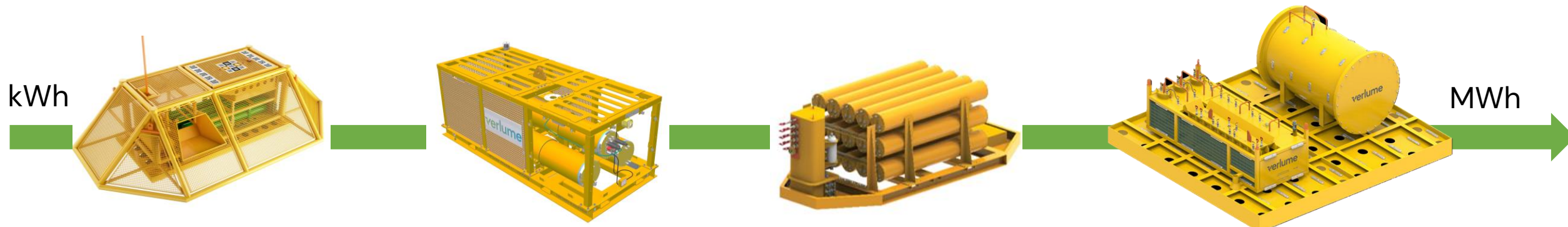


Power Generation Agnostic & Storage Scalable

Verlume's technology is agnostic, meaning that it can accept input from a variety of renewables sources:



Scalable storage capabilities to suit renewables input/water depth/applications:



Offshore Wind Energy Storage

Extensive track record in subsea engineering and energy storage systems.

- + We design and build large scale underwater batteries and intelligent energy management systems
- + Multiple Use-cases – Stacked Revenue

BENEFITS:

- + Scalable energy +10's MWh.
- + More cost effective than above water
- + Enhanced thermal performance
- + 250,000 tonnes CO2 reduction /year by 2030 across Europe using eCTVs.





Andy Martin / CCO
andy.martin@verlume.world
+44 (0)7359478667

Seascope Surveillance

David Still



SEASCAPE SURVEILLANCE

Innovative remote sensing & AI for offshore
renewable energy

OUR MISSION

To provide an aerial bio-diversity survey capability for the offshore renewable energy sector that is:

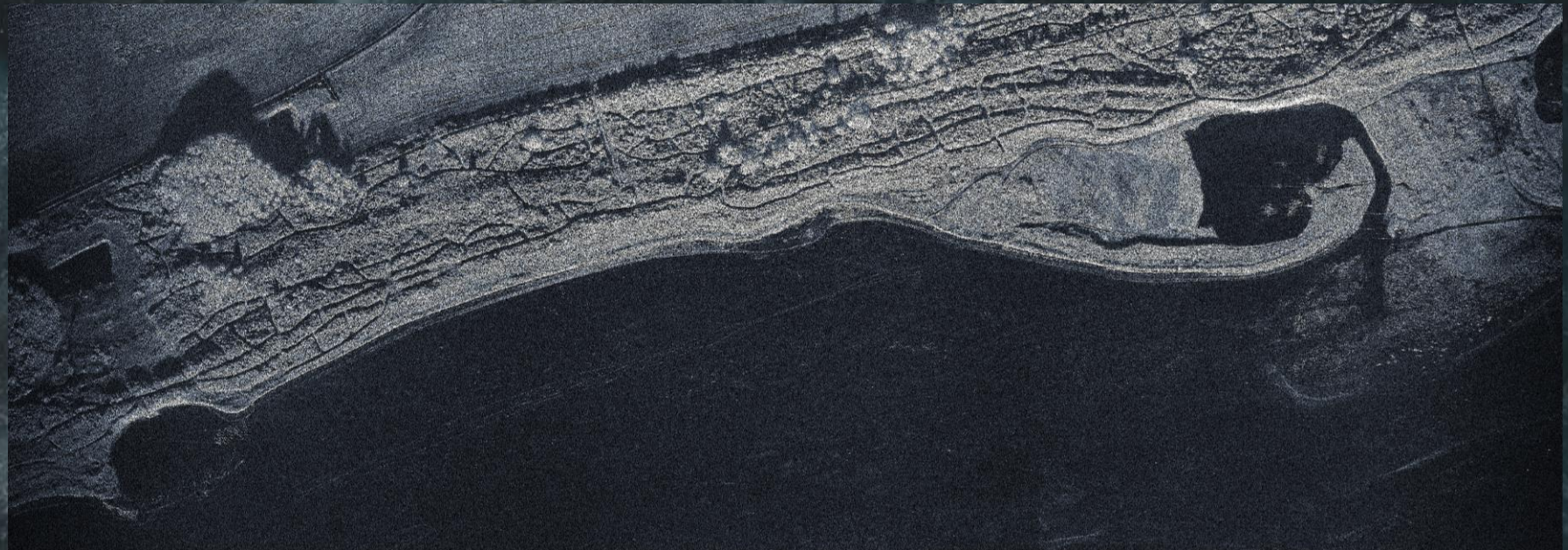
- ▶ Statistically more robust than current methodologies
- ▶ More cost effective
- ▶ With lower carbon emissions
- ▶ And meets all international regulatory requirements



WHY ARE **BIODIVERSITY SURVEYS** NEEDED?

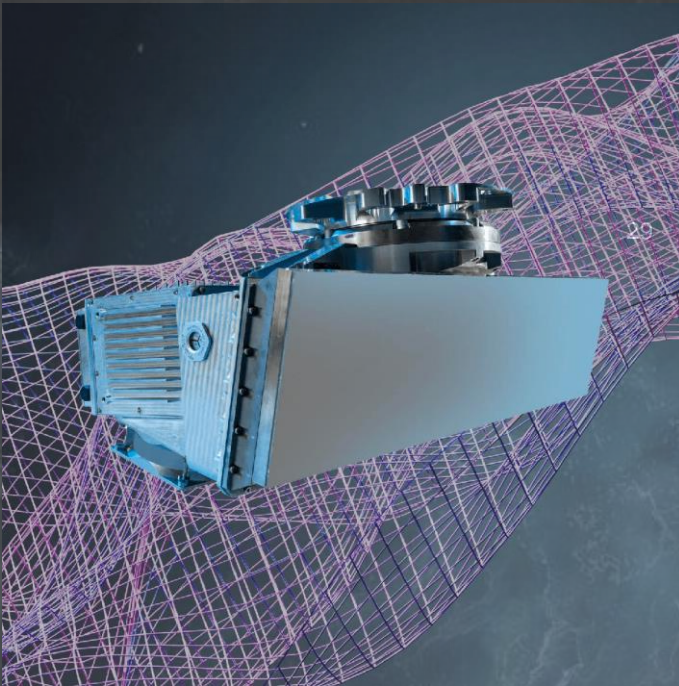
THE **LIMITATIONS** OF CURRENT VISUAL SURVEYS

THE **ADVANTAGES** OF SYNTHETIC APERTURE RADAR



THE SEASCAPE SOLUTION

AIRBORNE SYNTHETIC APERTURE
RADAR



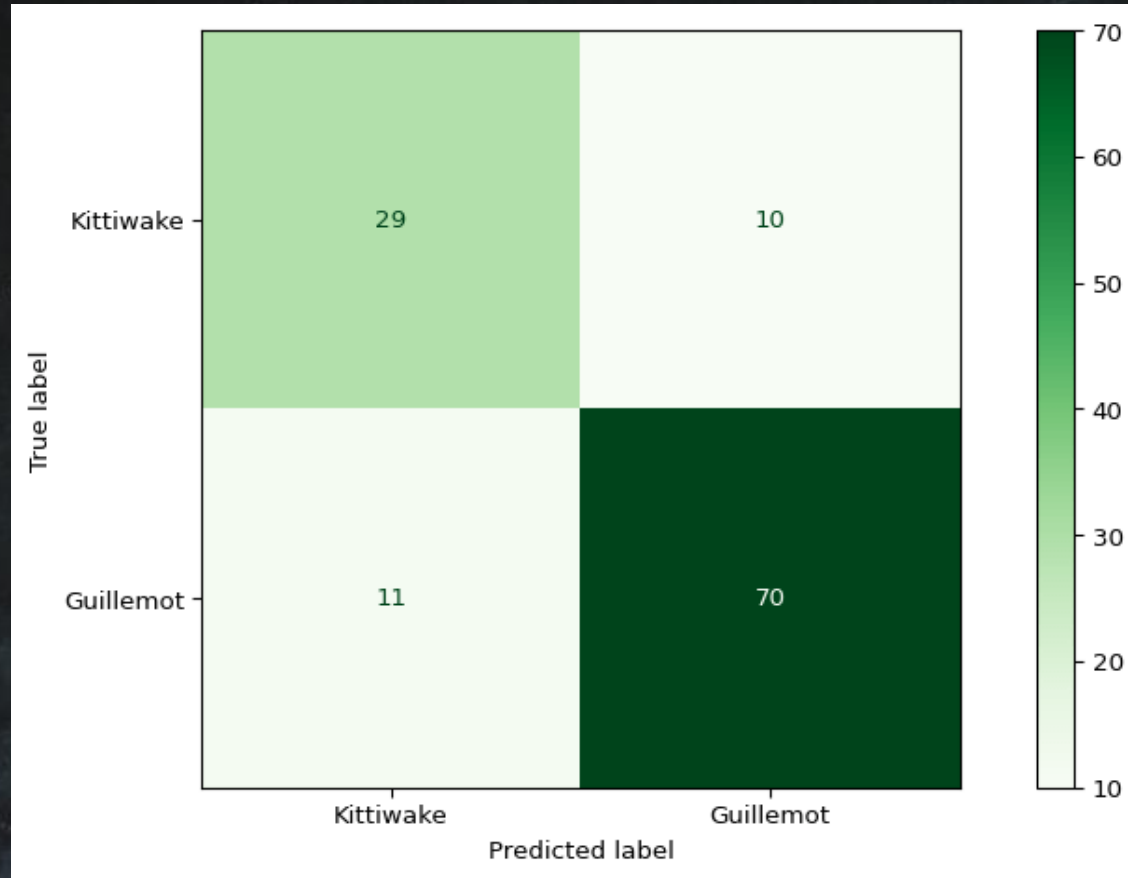
In SAR, the speed of the radar moving past the target is used to create a more accurate image

CHALLENGE 1: **BIRD DETECTION**

30

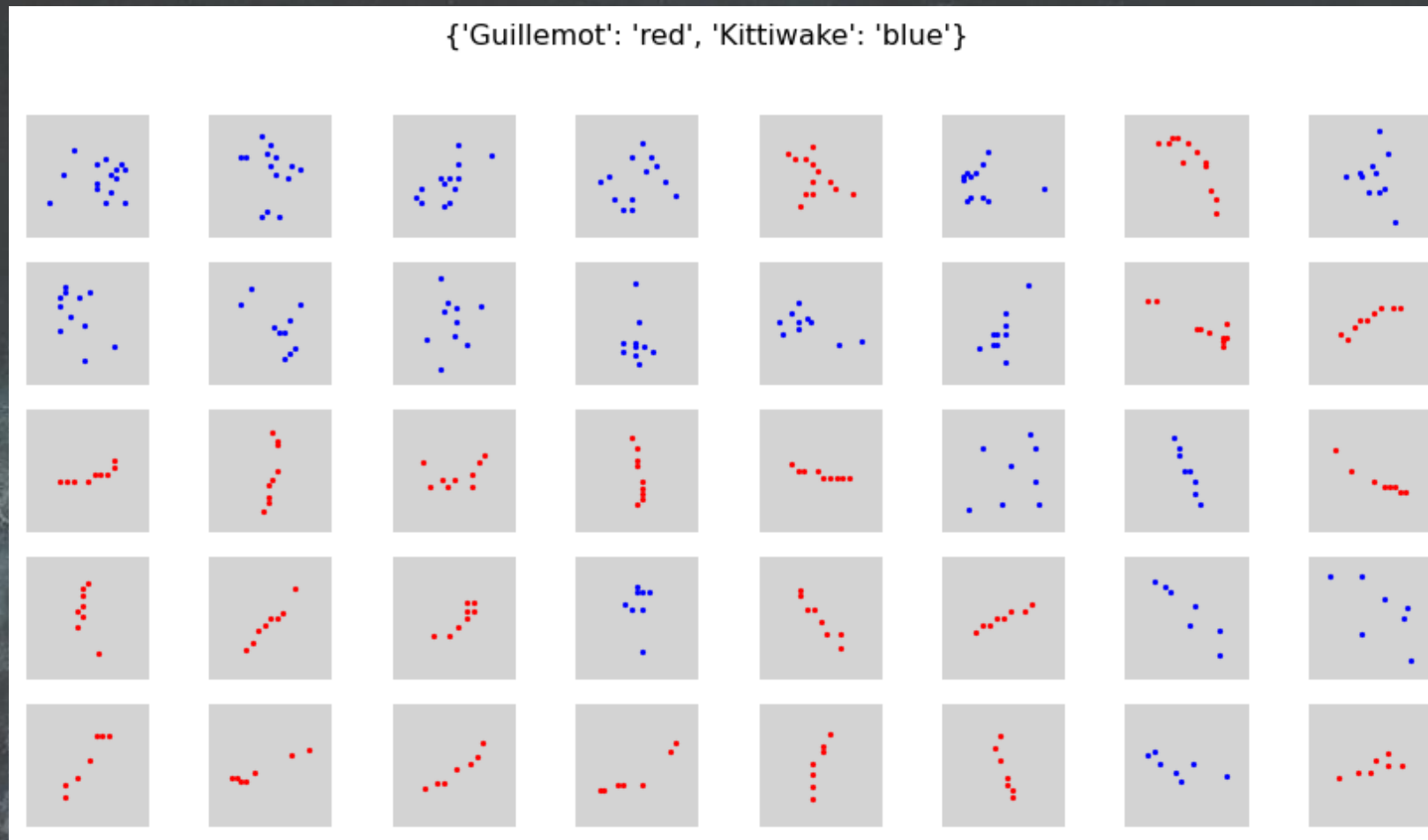
CHALLENGE 2: **SPECIES IDENTIFICATION**

INTERIM RESULTS: CNN MODEL PERFORMANCE

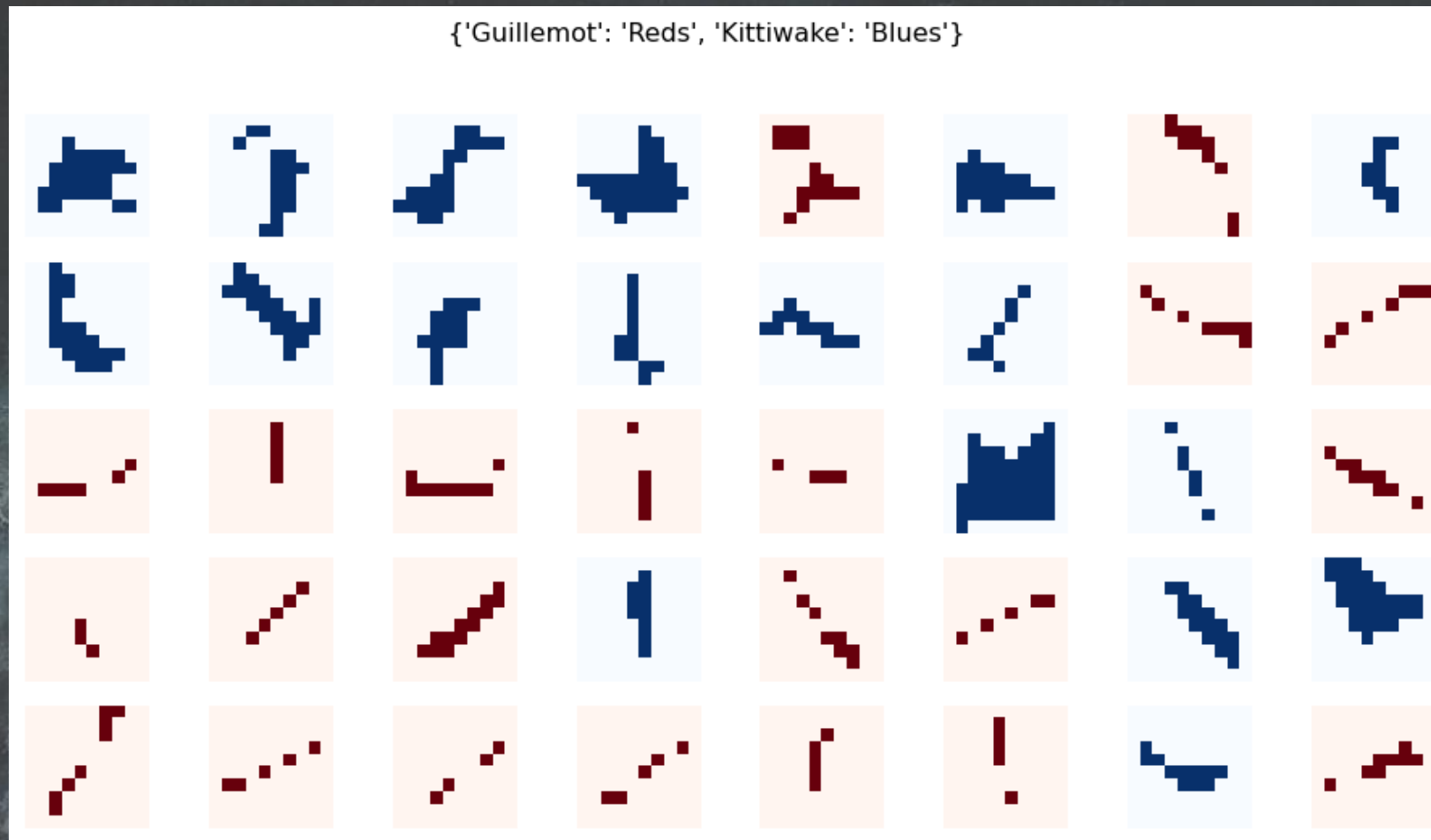


K-fold cross-validation
5+ sightings per cluster
Balanced Accuracy: 0.80 (120 samples)

Clusters by species



Concave hull images



OUR INVESTMENT INVITATION



Synthetic Aperture Radar is an existing and proven technology, but is still mainly employed in the defence sector.

We believe Seascope has the vision, knowledge and experience to apply this powerful and innovative technology to the expanding offshore renewable energy market.

To do this we have to run an initial TRL2 - TRL5 R&D programme which we estimate requires £350k over 9 months.

We therefore invite investment offers to bring this innovative and disruptive proposal to a profitable commercial reality



THE FOUNDERS

DAVID BAILLIE

Developed first digital aerial video survey technology
Proven track record in bringing new technology to market
Long career in aerial imaging
Over 20 years experience of ORE
Emmy & Bafta awarded wildlife cinematographer



DAVID STILL CBE

Over 25 years as senior leader in UK ORE
Developed UK's first offshore wind farm in 2000
Past ORE advisor to UK Government
Past Chair of the UK offshore wind trade association
Awarded CBE for services to Offshore Renewables



SEASCAPE 

THANK YOU FOR
YOUR INTEREST

INFO@SEASCAPE-SURVEILLANCE.COM

Aquatec Group

Andy Smerdon

AQUATEC





Ready for Investment

Smart Subsea Integrity Systems
including CPS Monitoring

Cable & Protection System Failure

- Subsea cables are most vulnerable component in offshore wind
- Growing losses from cable failures
- Claims totaling £500M in 2020
- High profile Cable Protection System (CPS) failures revealed in 2021
- Proves to be industry-wide problem

Subsea Cables Account for Over 50 Pct of Total Claims Spend in Offshore Wind - GCube Insurance

BUSINESS & FINANCE

November 9, 2021, by Adrijana Buljan

Combined market losses in offshore wind grew from GBP 124 million (around EUR 145 million) in 2010-2015 to GBP 500 million (around EUR 585 million) by 2020, with the average insurance claim nearly doubling from GBP 1.67 million (around EUR 2 million) to GBP 3.08 million (around EUR 3.6 million) in the same period, according to a new claims report titled from GCube Insurance.

REUTERS EVENTS™
RENEWABLES

Menu

Growing findings of offshore cable damage hike pressure on protection

Jun 9, 2021

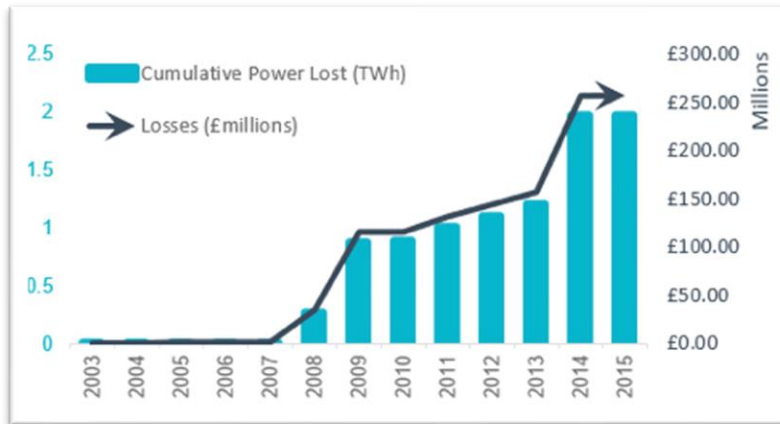
A number of offshore wind developers have followed Orsted and revealed cable faults, increasing the need for better protection as projects move further out to sea.

Ørsted and Tekmar Tackle Array Cable Issue at Race Bank Offshore Wind Farm

May 4, 2021, by Adnan Durakovic

Ørsted and the cable protection systems (CPS) manufacturer Tekmar are jointly trying to identify the root cause of the inter-array cable issue identified at the Race Bank wind farm offshore UK earlier this year.

As reported earlier, Ørsted flagged the issue in its Q1 2021 interim report, saying that apart from Race Bank, up to nine other offshore wind farms in the UK and Continental Europe could be affected, with the cost of remedial work and repairs potentially reaching up to DKK 3 billion (EUR 403 million) over the next three years.

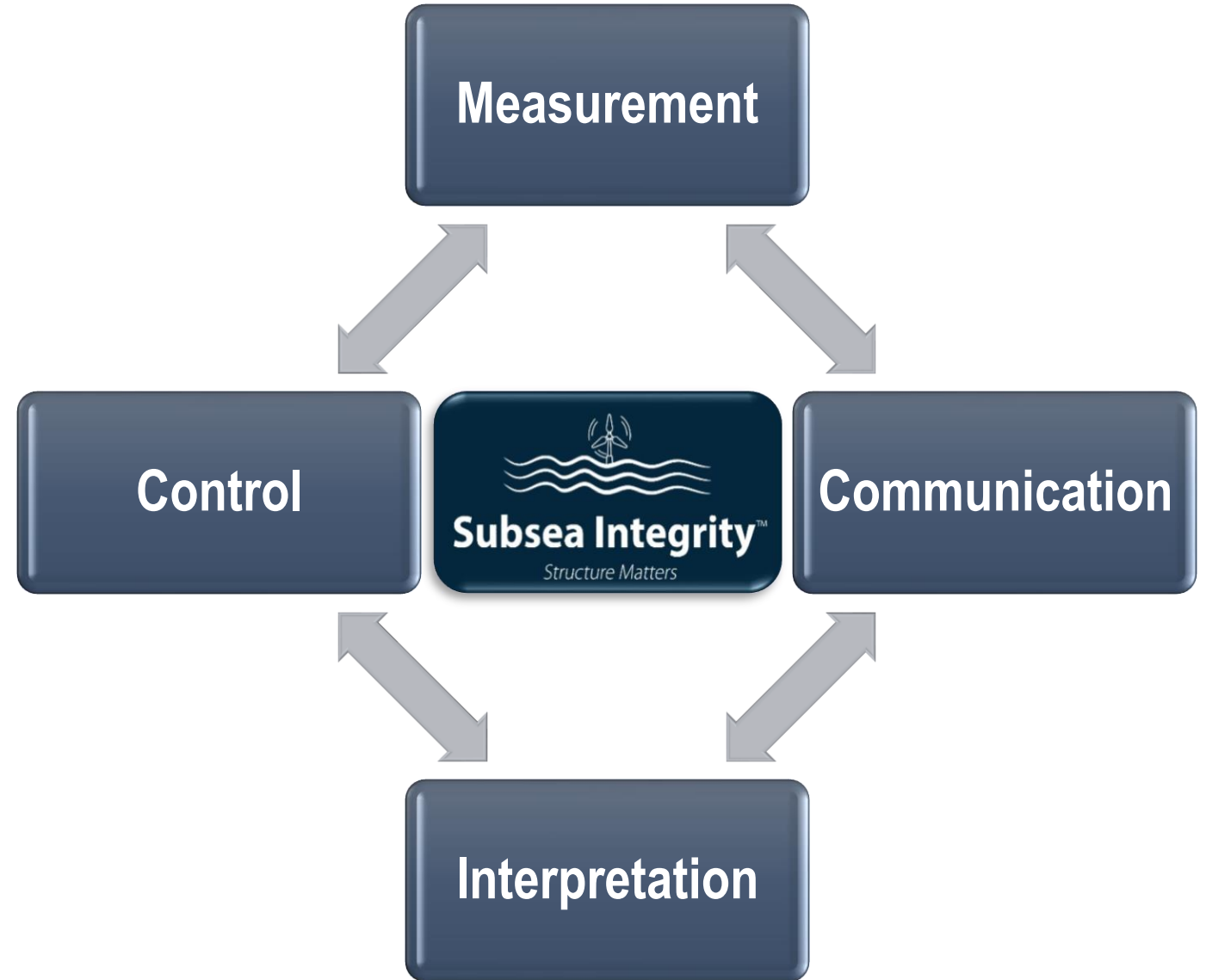


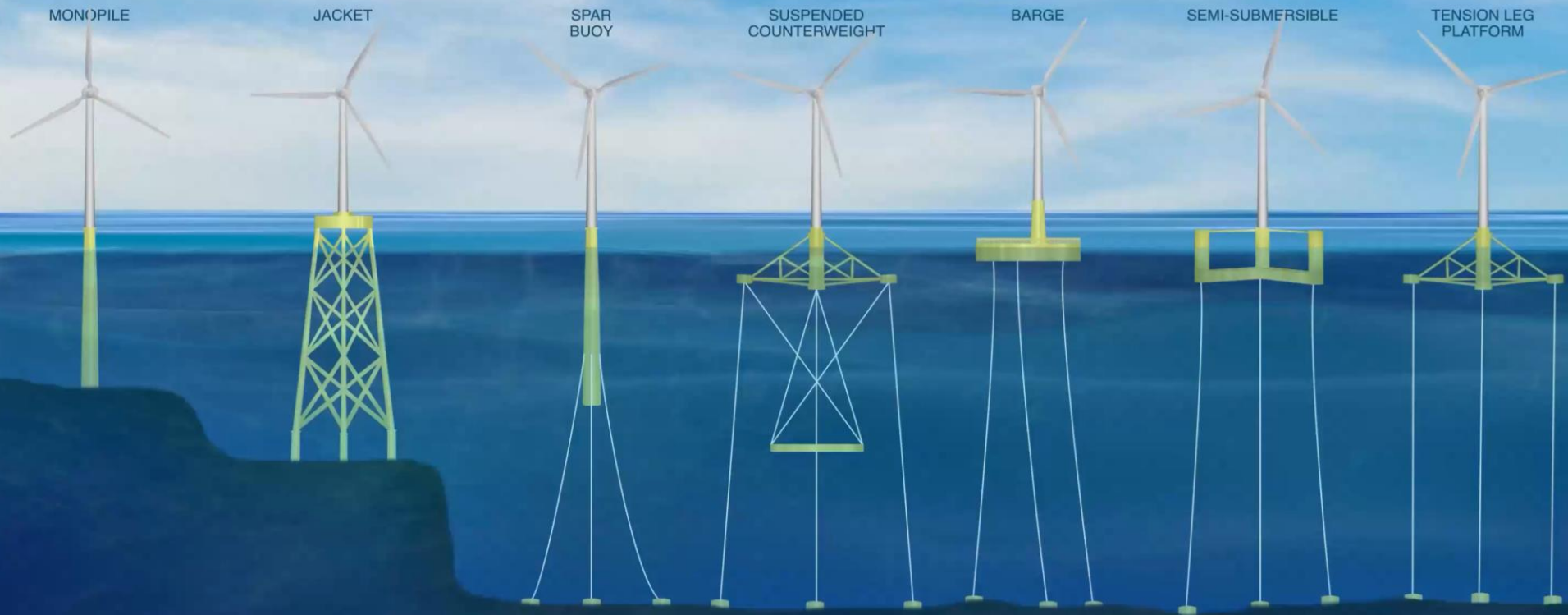
Offshore Wind Subsea Power Cables
El Mountassir & Strang-Moran, 2018

Award-Winning Subsea Instrumentation since 1990



Smart devices to monitor the structural health of your subsea assets



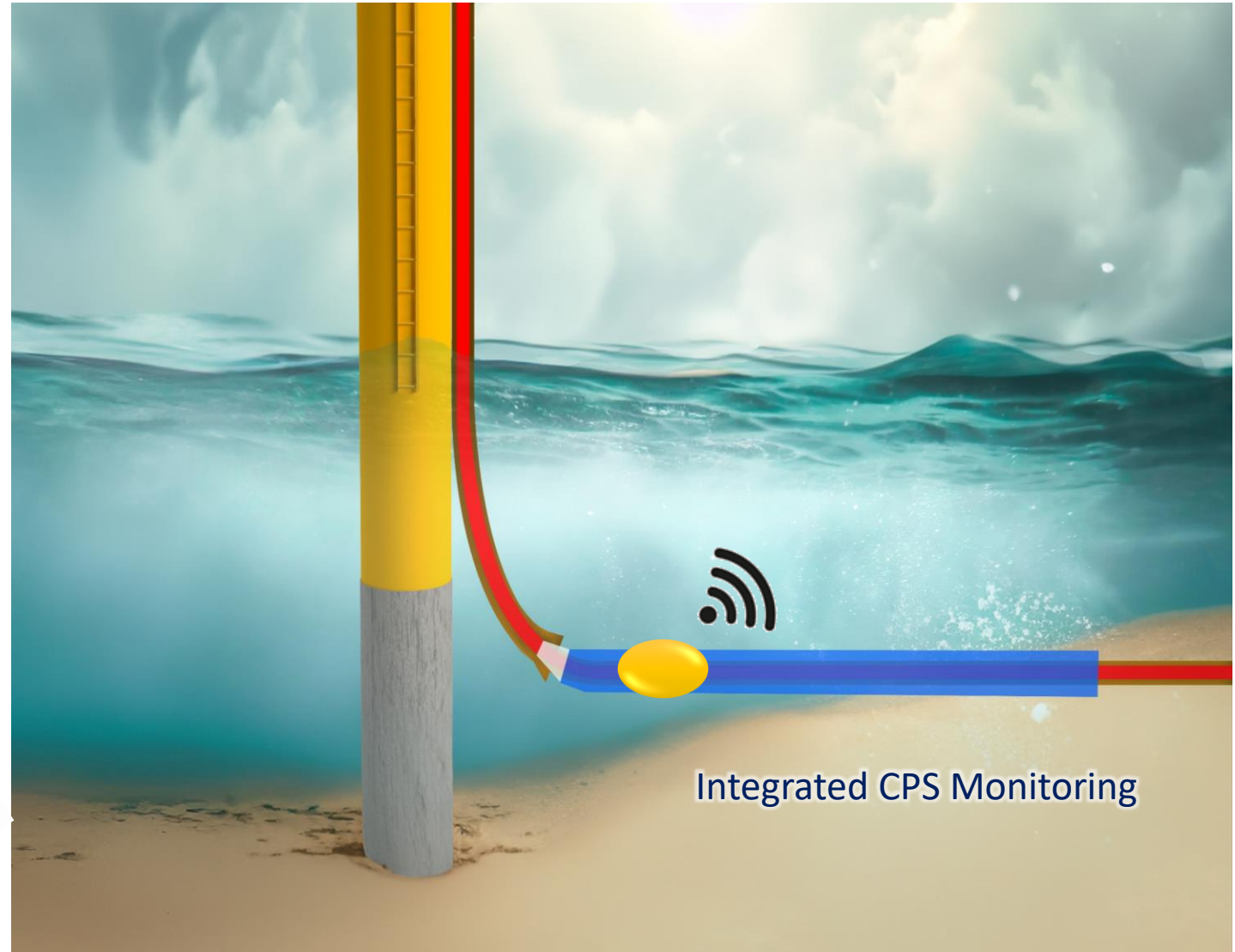
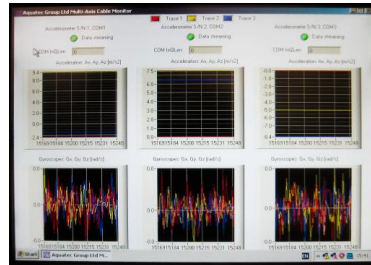
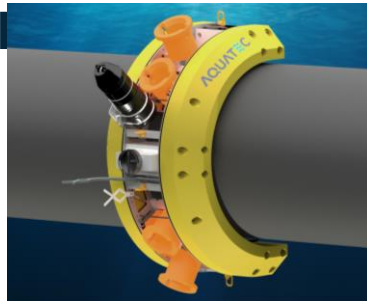


PLUS INTERNAL SPACES

- WITHIN MONOPILE
- BALLAST TANKS

Combining award-winning technologies to provide integrated CPS monitoring

- Retrofit strain monitoring
- Motion monitoring
- Distributed communications



Aquatec offers:

- *Smart* systems and devices that monitor your *subsea assets*, enabling:
 - Condition-based maintenance
 - Early warning of failure
 - Peace of mind
- A Cable and Cable Protection System monitoring concept
 - Combines award-winning technologies
 - Applicable to fixed and floating offshore wind
- And we are seeking from Installers, Operators, and Cable Manufacturers:
 - Opportunities to test, evaluate, demonstrate, and install
- We are also open to investment partnerships to:
 - Expand our global offshore energy reach
 - Further develop our technology

Thank you!

Please connect with me here:



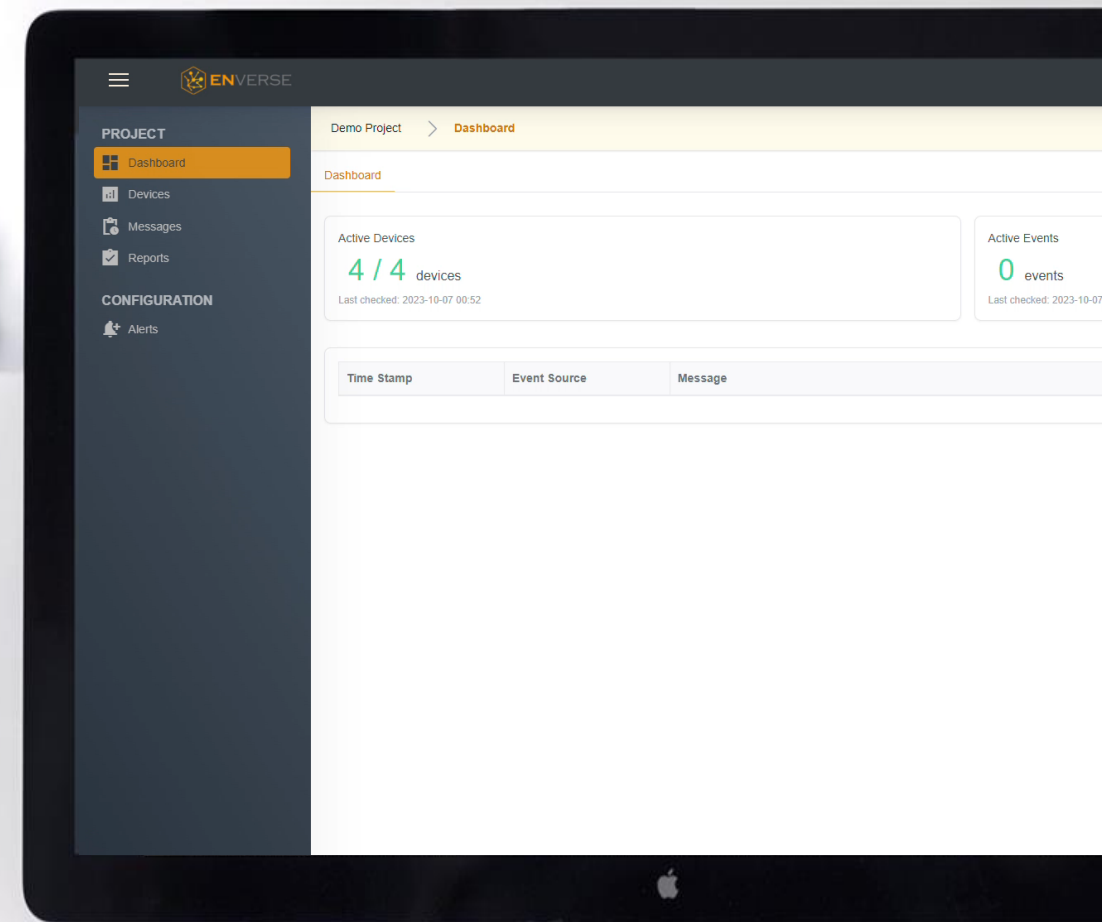
Enverse
Howard Low



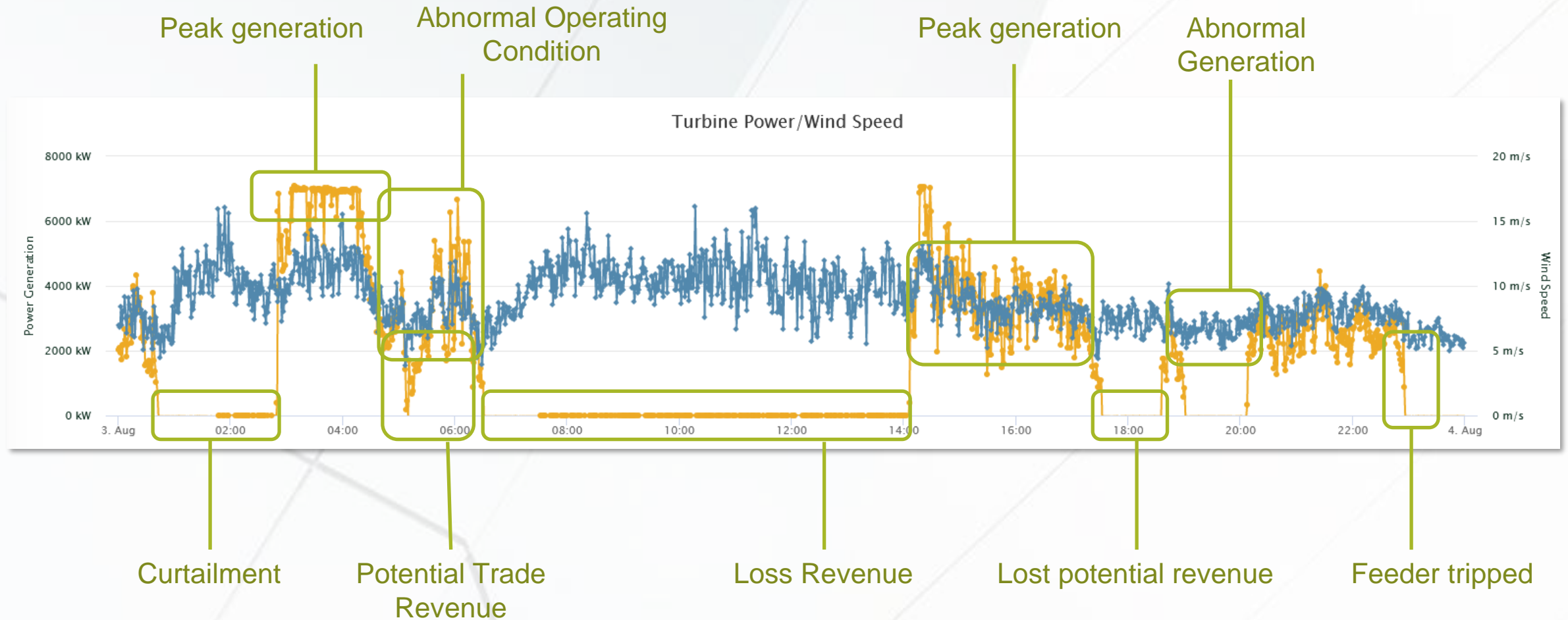


ENVERSE

Industrial microservices for
automated **data analytics** and
machine learning



Contextual data analysis is difficult and expensive



Comprehensive solutions in one location

We built applications with end-users so they can iterate faster and utilise proven applications

This screenshot shows a software catalog interface for 'ENVERSE'. It features a grid of application modules, each with a title, icon, category, and a 'Deploy' button. The user is logged in as 'Howard Low, CEO'. The modules include:

- API - OpenWeather** (API): Real time OpenWeather API.
- SolariaAM - Solar dashboard** (Solar): Bespoke solar asset management for Solaria AM.
- Energy Meters** (Meter): This module sets up the basic dashboard with the typical data analytics required for the energy meter.
- Grid Flexibility UI** (Grid Flexibility): This module sets up the basic solar monitoring dashboard with the typical data analytics required for a solar plant.
- Offshore Wind Farm Management** (Wind): Basic windfarm management system for offshore wind.
- Flexibility Data Sets** (Data): This module provides the data sets for the demonstration of grid flexibility module.
- Compressed Air Module** (Dashboard, Industry, Air): This module sets up the basic compressed air condition monitoring dashboard.
- HVAC Core Module** (Dashboard, HVAC, Chill Water): Generalised HVAC Condition Monitoring Module.
- PR Calculation** (Solar, Meter): Calculate Performance Ratio (PR) of the solar power plant.
- Climate Risk Analysis**
- Vibration Analysis Module**
- Anomaly Detection**

This screenshot shows the ENVERSE dashboard for a 'Development Project'. The user is logged in as 'Howard Low, CEO'. The dashboard displays real-time energy data and a forecasted generation chart.

Real-time Energy Data:

- Active Power: 8.09 MW
- Reactive Power: 1.59 MVAR
- Voltage: 11.45 kV
- Frequency: 50.6 Hz

Forecasted Half Hourly Generation:

The chart shows 'Forecasted Energy Generation' (MWh) over time. The Y-axis ranges from 0 MWh to 6 MWh. The X-axis shows time from 08:00 to 16:00. The chart displays 'Energy Generated (MWh)' as orange bars and 'Wholesale Electricity Price' as a blue line.

Real-time Status:

- Turbine Power: 0 MW
- Battery SoC (idle): 100 %
- Operating Mode: Cost Optimise

Products

Complete suite of products that ensure smooth end to end journey

Connect

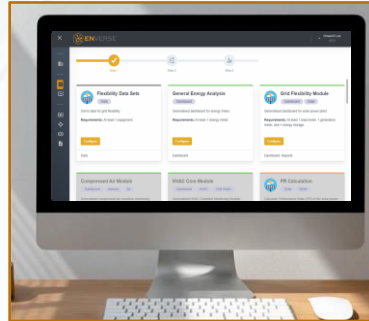
Analyse

Visualise



Inverse Edge

Extract data from physical assets to the cloud




Inverse Insight

Microservices that generate actionable insights.



Inverse SkyBridge

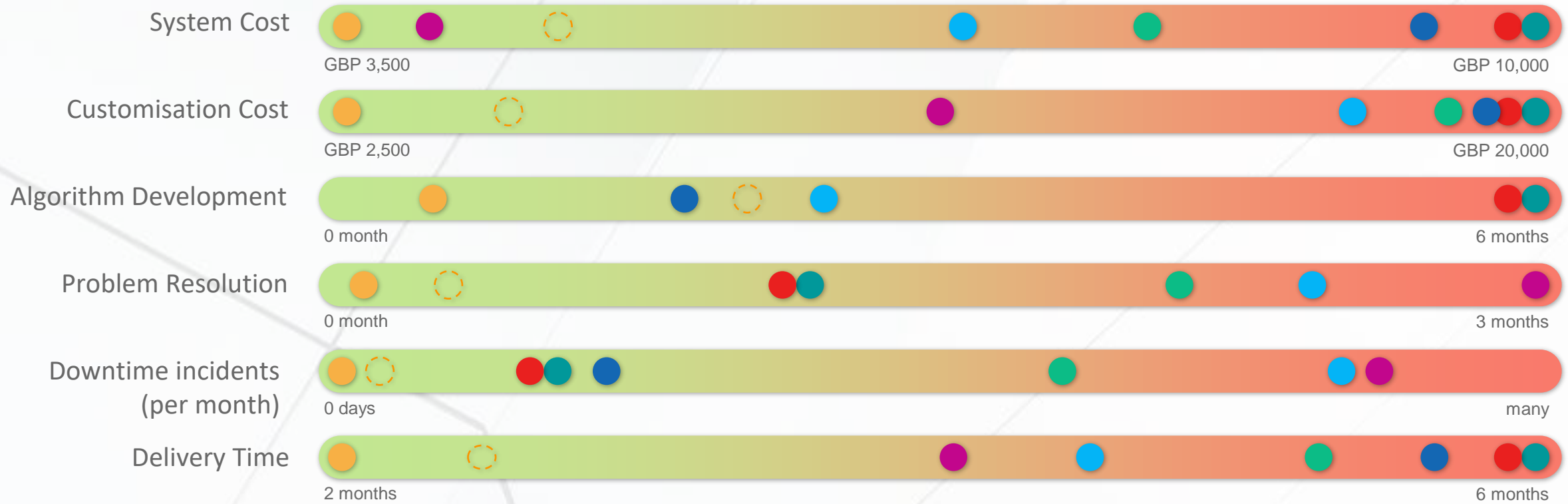
Data visualisation and data analytics.



We have reduced engineering hours by up to **80%** by streamlining SCADA development

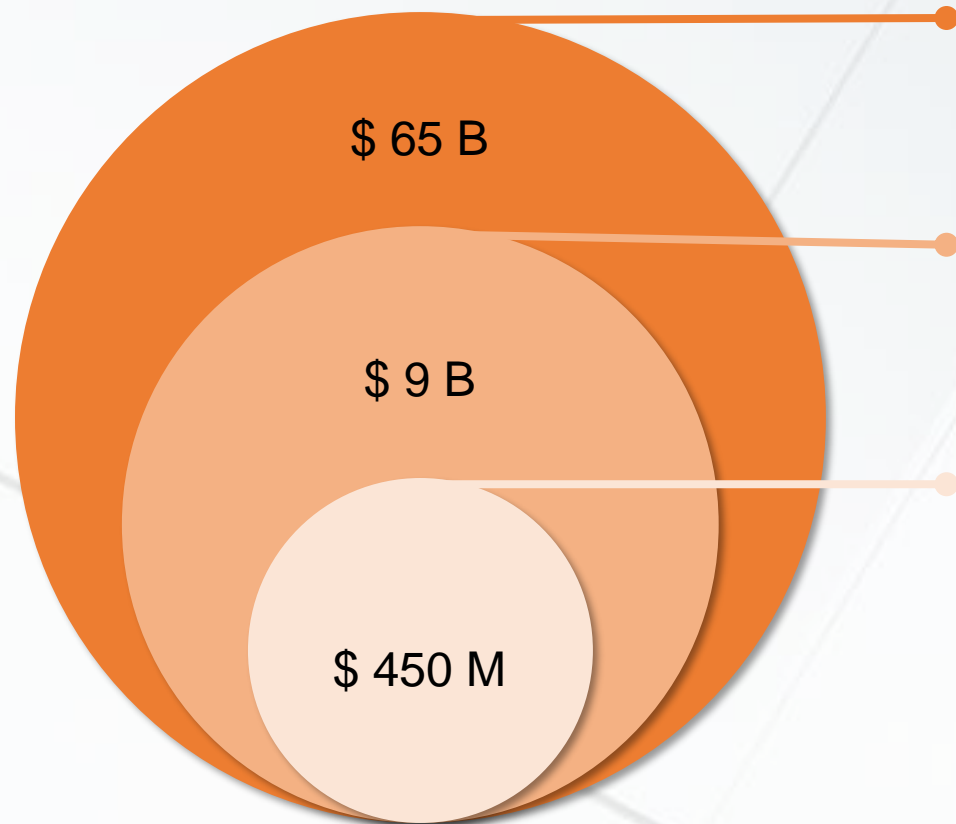
Delivery Performance Analysis

Benchmarking our performance using intel from our customers



Note: The lean organisation structure allows for efficient project management. The future price reflects the market capture strategy moving forward.

Market Opportunity



Total Addressable Market

Global data analytics market, Internet of Things market, and Edge computing market

Serviceable Addressable Market

Industrial data analytics market, Industrial Internet of Things market, and Industrial Edge computing market

Serviceable Obtainable Market

5% of SAM



IoT and Analytics Market

12% CAGR *
2020 – 2025



Digital Twin Market

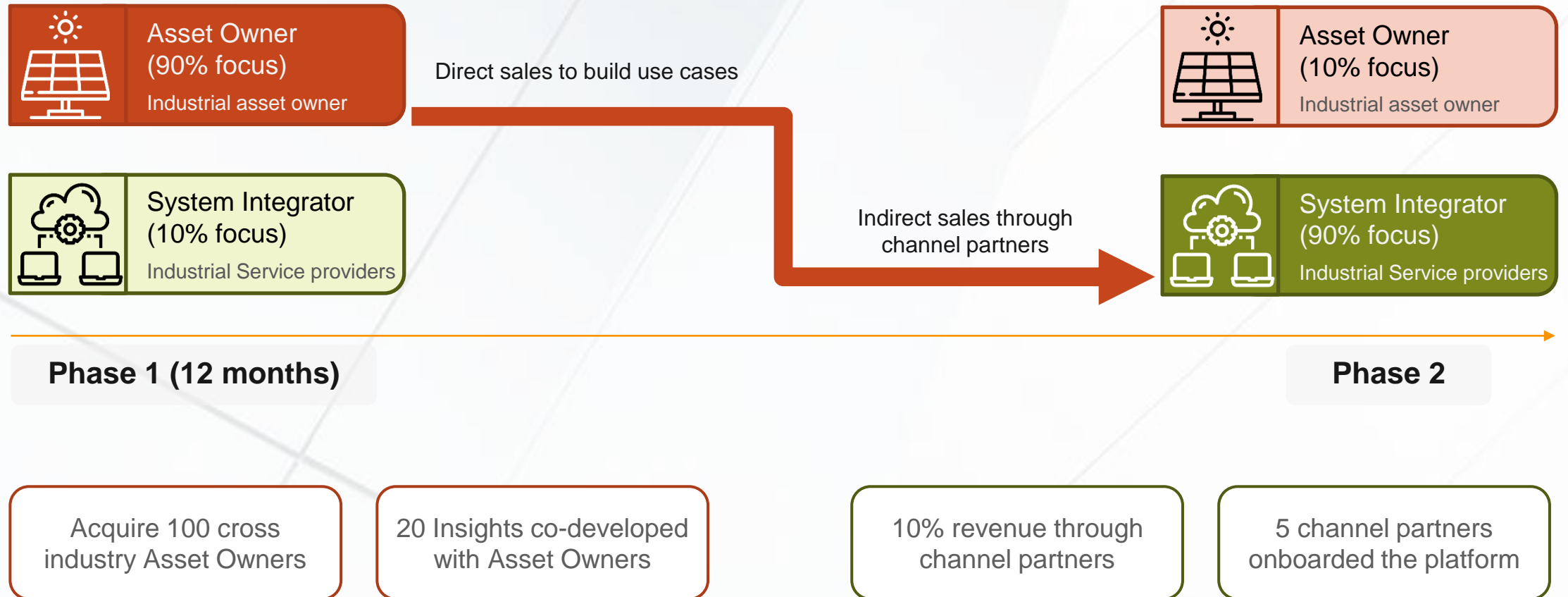
42% CAGR *
2021 – 2028

*Leveraging Industrial IoT and advanced technologies for digital transformation (2021), McKinsey and Company

**Global Digital Twin Market Size and Share to Surpass USD 53.5 Billion by 2028 (2022), Vantage Market Research

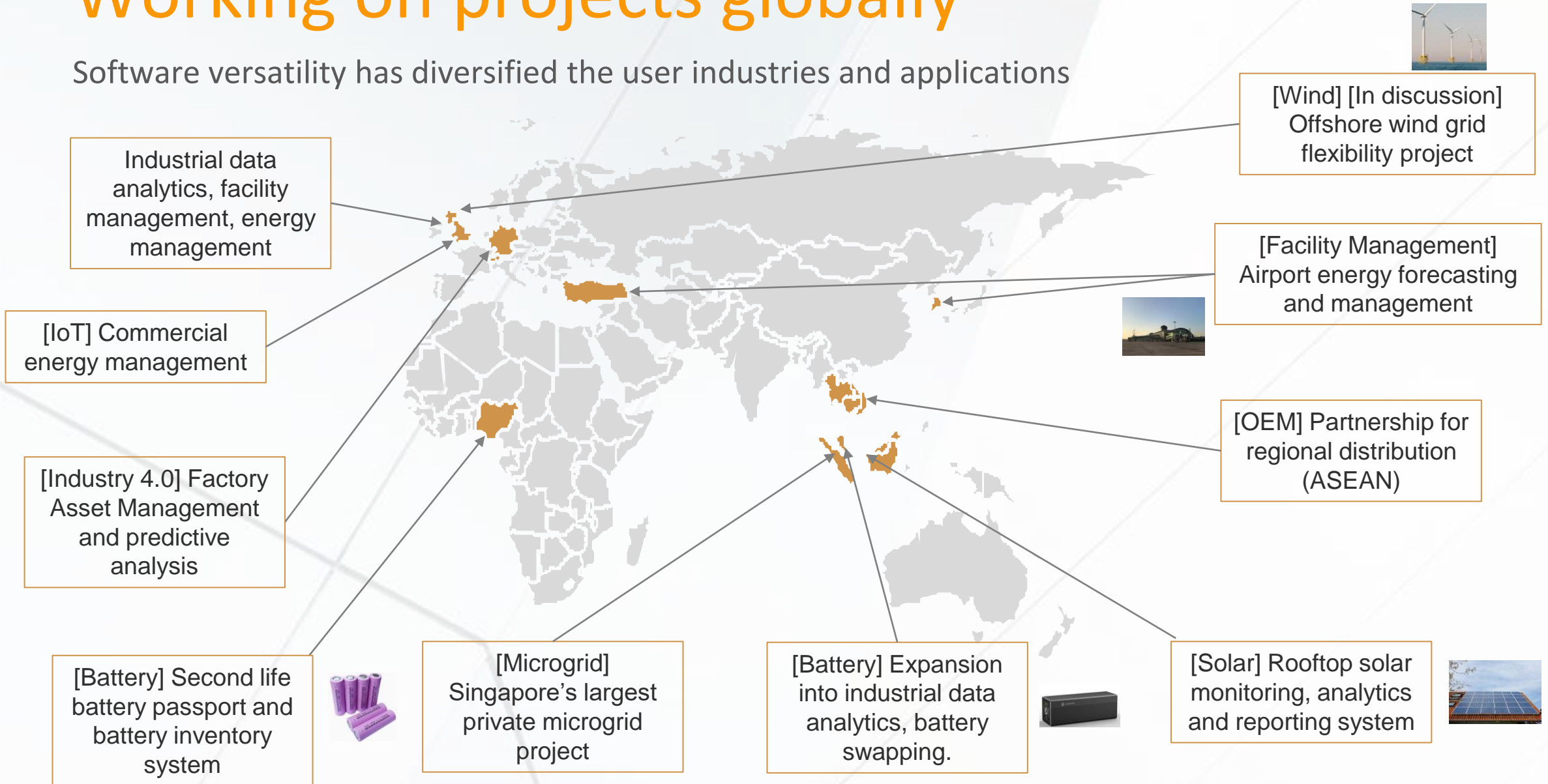
Go To Market

Expanding use cases in the next 12 months, changing distribution strategy afterwards



Working on projects globally

Software versatility has diversified the user industries and applications



Business Model

1 time
System Setup

Customisation
Increase Scope of Work

Annual
Subscription

Our Customers, Users, and Partners



Renewable Energy Asset Under Management



2022

12 MW

32 MW

2023

The Team



Howard Low
CEO

12 years of engineering and technology development in the energy industry. **Industrial sales engineer** winning oil and gas control system contracts. **Lead engineer** in power management system and distributed control system (DCS) on projects >\$25 million in system value. Qualified **full stack software engineer** and **machine learning engineer**.



Patrick Lane
CTO

A **chartered engineer** with more than 25 years of experience working with the analysis and simulation of data feeds in highest motorsport formulae. **Led a team of 25 people** working with visualisation and automated analysis of real-time data feeds in deep tech sphere. A **Systems and Technology specialist** focused on executing and driving strategy to deliver sustainable technical projects.

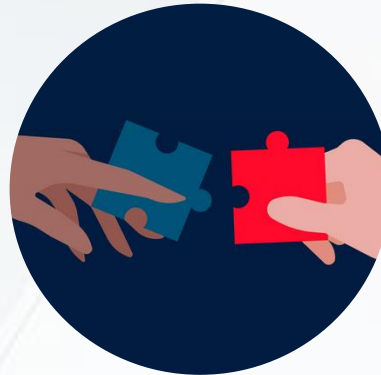


Talk to us about



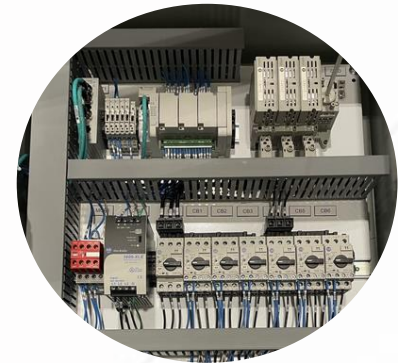
Investment

Seed funding for to grow the company to breakeven point within 2 years



Partnership

Pilot project development or product development partnership



Engineering and Project

SCADA system engineering, PLC programming, and engineering services

Follow up



Howard Low, CEO
howard@enverselab.com



Patrick Lane-Nott, CTO
patrick@enverselab.com

Rovco
Simon Miller

ROVCO





ROVCO

Vaarst

Series C – Q3 2024

AI enabled energy transition

Dec 2023

Key abbreviations:

- *SLAM: Simultaneous localization and mapping*
- *AUV: Autonomous underwater vehicle*
- *ASV: Autonomous surface vehicle*
- *ROV: Remotely operated vehicle*

STRICTLY CONFIDENTIAL

Born for renewables

117
Staff

£46m
Revenue
2024

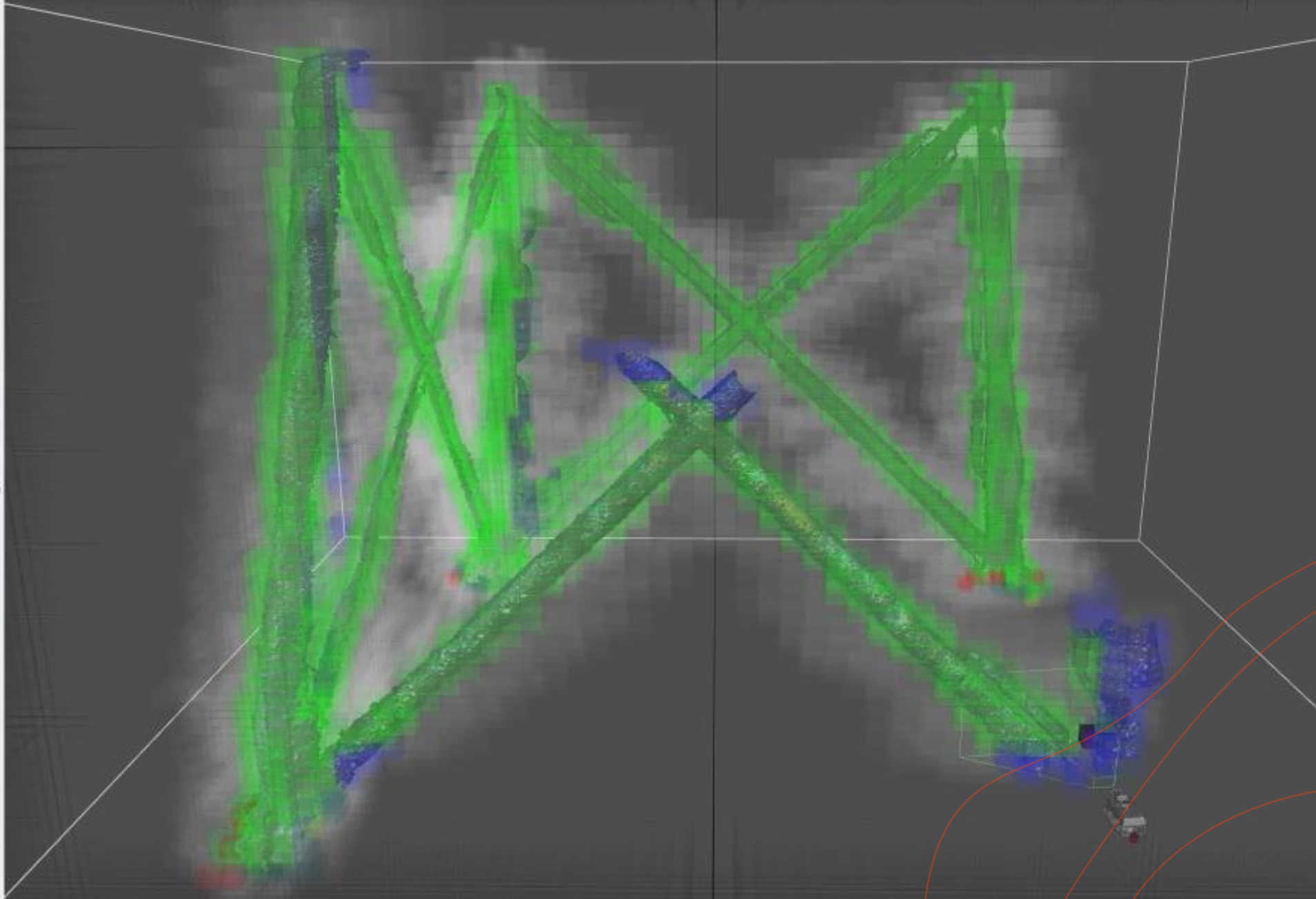
£304m
Sales
Pipeline

41%
Win Ratio

EBITDA
Breakeven
now

\$5bn+
Exit
Valuation

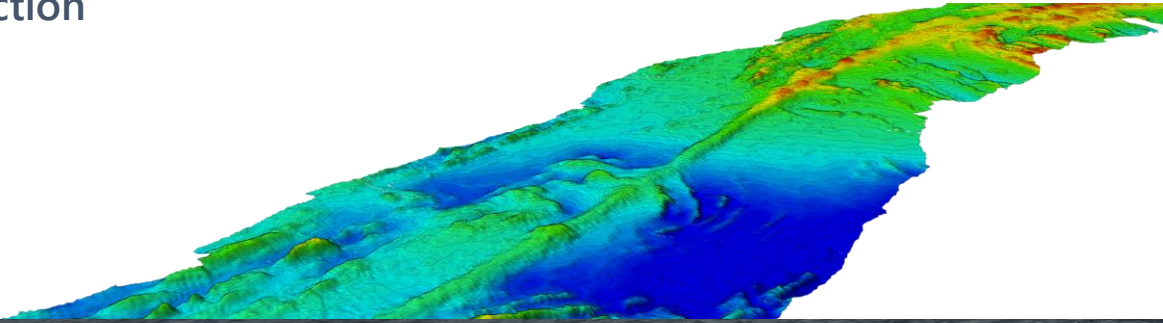
World's 1st AI driven autonomous survey



Unique methods using AI to navigate complex 3D structures

Unmanned Site Mapping

Building the capability to automatically collect and process data live to inform how robotic vehicles work together for efficient data collection



ROVCO
GLOMAR SUPPORTER
Multipurpose DP2 Survey Vessel



Opportunity

- Investment in a rapidly accelerating business within a huge energy market
- EBITDA breakeven now and cash generative onwards.
- £10m growth capital (CLN) expected to land in Jan 24.
- Exec and wider team is already assembled and consistently delivering
- Strong success in multi \$m tech and tech enabled services contracts
- A potential \$5bn+ exit within 5 years

Important Notice

This presentation has been prepared by, and is the sole responsibility of, Rovco Ltd (the "Company") and has been prepared in connection with Project Resolute (the "Investment Opportunity").

For the purposes of this disclaimer:

- this "presentation" shall mean and include the slides that follow, the oral presentation of the slides by the Company or any person on its behalf, any question-and-answer session that follows the oral presentation, together with electronic and hard copies of this document;
- "Shares" shall mean ordinary shares of no par value each in the capital of the Company; and
- any reference to any provision of any legislation herein shall include any amendment, modification, re-enactment or extension thereof.

None of the Company, the Broker or any of its directors, officers, partners, employees, agents, affiliates, representatives or advisers (together, "Affiliates") or any other person makes any representation or warranty, express or implied, as to the accuracy or completeness of the information or opinions contained in this presentation and no reliance should be placed on the accuracy, completeness or fairness of the information or opinions contained in this presentation and no responsibility or liability is assumed by any such persons for any such information or opinions or for any errors or omissions.

To the fullest extent permitted by law, none of the Company, the Broker, their respective Affiliates or any other person accepts any liability whatsoever for any errors, omissions or inaccuracies in such information or opinions or for any loss, cost or damage suffered or incurred howsoever arising, directly or indirectly, from any use of this presentation or its contents or otherwise in connection with the subject matter of this presentation or any transaction, matter or arrangement referred to herein.

This presentation has not been approved by the Broker for the purposes of section 21 of the Financial Services and Markets Act 2000 (the "FSMA"), or otherwise by the United Kingdom Financial Conduct Authority ("FCA") A or London Stock Exchange plc.

This presentation does not constitute or form part of any offer or invitation to sell or issue or any solicitation of any offer to purchase or subscribe for any securities of the Company nor shall it (or any part of it), or the fact of its distribution, form the basis of, or be relied upon in connection with or act as any inducement to enter into, any contract or commitment whatsoever. This presentation is not a recommendation regarding the securities of the Company. Recipients should not purchase, subscribe for or otherwise acquire any securities of the Company on the basis of this presentation.

This presentation does not purport to contain all of the information that may be required to evaluate any investment in the Company or any of its securities and should not be relied upon to form the basis of, or be relied on in connection with, any contract or commitment or investment decision whatsoever. This presentation is not intended to provide complete disclosure upon which an investment decision could be made. The merit and suitability of an investment in the Company should be independently evaluated and any person considering such an investment in the Company is advised to obtain independent advice as to the legal, tax, accounting, financial, credit and other related advice prior to making an investment.

To the extent available, the data contained in this presentation has come from official or third-party sources. Third-party industry publications, studies and surveys generally state that the data contained therein have been obtained from sources believed to be reliable, but that there is no guarantee of the accuracy or completeness of such data. While the Company believes that each of these publications, studies and surveys has been prepared by a reputable source, the Company has not independently verified the data contained therein. In addition, certain of the data contained in this presentation come from the Company's own internal research and estimates based on the knowledge and experience of the Company's management in the market in which the Company operates. While the Company believes that such research and estimates are reasonable and reliable, they, and their underlying methodology and assumptions, have not been verified by any independent source for accuracy or completeness and are subject to change without notice. Accordingly, undue reliance should not be placed on any of the data contained in this presentation.

The information contained in this presentation is provided as at the date of its publication and is subject to updating, completion, revision, amendment and further verification and does not purport to contain all information that may be required to evaluate the Company and/or the Transaction.

This presentation contains statements that are, or may be deemed to be, "forward-looking statements". These forward-looking statements may involve substantial risks and uncertainties and actual results and developments may differ materially from those expressed or implied by these statements by a variety of factors. Forward-looking statements are sometimes identified by the use of forward-looking terminology such as "believe", "expects", "may", "will", "could", "should", "shall", "risk", "intends", "estimates", "aims", "plans", "predicts", "projects", "continues", "assumes", "positioned" or "anticipates" or the negative thereof, other variations thereon or comparable terminology. These forward-looking statements speak only as at the date of this presentation. In addition, all projections, valuations and statistical analyses provided in this presentation may be based on subjective assessments and assumptions and may use among alternative methodologies that produce different results and should not be relied upon as an accurate prediction of future performance. These forward-looking statements are statements regarding the Company's intentions, beliefs or current expectations concerning, among other things, the Company's results of operations, financial condition, liquidity, prospects, growth, strategies and the industry in which the Company operates. The forward-looking statements in this presentation are based on numerous assumptions regarding the Company's present and future business strategies and the environment in which the Company will operate in the future. Forward-looking statements involve inherent known and unknown risks, uncertainties and contingencies because they relate to events and depend on circumstances that may or may not occur in the future and may cause the actual results, performance or achievements of the Company to be materially different from those expressed or implied by such forward-looking statements. Many of these risks and uncertainties relate to factors that are beyond the Company's ability to control or estimate precisely, such as future market conditions, currency fluctuations, the behaviour of other market participants, the actions of regulators and other factors such as the Company's ability to continue to obtain financing to meet its liquidity needs, changes in the political, social and regulatory framework in which the Company operates or in economic or technological trends or conditions. Past performance should not be taken as an indication or guarantee of future results, and no representation or warranty, express or implied, is made regarding future performance. Except as required by applicable law or regulation, none of the Company, the Broker, their respective Affiliates or any other person accepts undertakes any obligation to update or revise any forward-looking statements in this presentation.

No statement in this presentation is intended as a profit forecast or profit estimate and no statement in this presentation should be interpreted to mean that earnings per share of the Company for the current or future financial years would necessarily match or exceed the historical published earnings per share of the Company (unless otherwise stated). All information presented or contained in this presentation is subject to verification, correction, amendment, completion and change without notice, and such information may change materially.

In giving this presentation, none of the Company, the Broker, their respective Affiliates or any other person, undertakes any obligation to amend, correct or update this presentation or to provide the recipient with access to any further information that may arise in connection with it, or to advise any person of changes in the information set forth in this presentation after the date hereof.

The Placing does not constitute a public offer of transferable securities in the UK pursuant to section 85 of the FSMA and, accordingly, no prospectus or prospectus exempted document will be published in connection with the Transaction in accordance with the UK version of the Prospectus Regulation (EU) 2017/1129 (the "Prospectus Regulation"), which forms part of UK domestic law pursuant to the European Union (Withdrawal) Act 2018 (the "EUWA") (the "UK Prospectus Regulation").

This presentation is being distributed only to and is only directed at: (i) persons in member states of the European Economic Area ("EEA") who are "qualified investors" within the meaning of the Prospectus Regulation ("Qualified Investors"); and (ii) persons in the UK that are "qualified investors" within the meaning of the UK Prospectus Regulation and are persons: (a) who have professional experience in matters relating to investments falling within Article 19(5) of the Financial Services and Markets Act 2000 (Financial Promotion) Order 2005, as amended (the "Order"); (b) who are high net worth persons or entities falling within Article 49(2)(a) to (d) of the Order; or (c) to whom it may otherwise be lawfully distributed (all such persons in (a), (b) and (c) together being referred to as "Relevant Persons"). Any person who is not a Qualified Investor or a Relevant Person should not act or rely on the information contained in this presentation. If you are in any doubt as to the matters contained in this presentation (including whether you fall within the definitions of Qualified Investor or Relevant Person), you should consult an authorised person specialising in advising on investments of the kind contained in this presentation. Any investment or investment activity to which this presentation relates is available only to Qualified Investors and Relevant Persons.

This presentation and its contents are confidential and are being supplied to you for your own information and may not be forwarded, distributed, transmitted, published, reproduced or otherwise recorded, copied, made available, or disclosed by any recipient, to any other person (whether within or outside such person's organisation or firm), in whole or in part, directly or indirectly, for any purpose or under any circumstances. In particular, this presentation should not be forwarded, distributed, transmitted, published, reproduced or otherwise recorded, copied, made available, or disclosed by any recipient, directly or indirectly, in, into or from Australia, Canada, Japan, New Zealand, the Republic of South Africa or the United States, its territories or possessions or in any other jurisdiction where to do so would lead to a breach of any law or regulatory requirements. The distribution of this presentation in certain jurisdictions may be restricted by law, and persons into whose possession this presentation come should inform themselves about, and observe, any such restrictions. Any failure to comply with these restrictions may constitute a violation of the laws of the relevant jurisdiction.

Important Notice (continued)

The securities of the Company have not been, and will not be, registered under the United States Securities Act of 1933, as amended (the "U.S. Securities Act"), or under the applicable securities law or with any securities regulatory authority of any state or jurisdiction of the United States or under the securities laws of Australia, Canada, Japan, New Zealand, the Republic of South Africa, or any state, province or territory thereof or any other jurisdiction where to do so would lead to a breach of any law or regulatory requirements and may not be taken up, offered, sold, resold, pledged, transferred, delivered or distributed, directly or indirectly, within, into or from such jurisdictions, or to, or for the account or benefit of, any person with a registered address in, or who is a resident or ordinary resident in, or a citizen of such jurisdictions or to any person in any country or territory where to do so would or might contravene applicable securities laws or regulations except pursuant to an applicable exemption. Securities may not be offered, sold, resold, taken up, exercised, renounced, transferred or delivered, directly or indirectly, within the United States or to, or for the account or benefit of, any U.S. person (as defined in Regulation S under the U.S. Securities Act ("Regulation S")) or other any other person with a registered address in, or who is resident or ordinarily resident in, or a citizen of, the United States except pursuant to an exemption from, or in a transaction not subject to, the registration requirements of the U.S. Securities Act. Subject to certain limited exceptions, neither this presentation nor any copy of it may be taken, transmitted or distributed, directly or indirectly, into the United States, its territories or possessions. Any failure to comply with the foregoing restrictions may constitute a violation of U.S. securities laws.

Any securities of the Company will only be offered and sold outside of the United States in "offshore transactions" within the meaning of and in reliance on the safe harbour from the registration requirements under the U.S. Securities Act provided by Regulation S. The securities of the Company have not been approved or disapproved by the U.S. Securities and Exchange Commission, any state securities commission or other regulatory authority in the United States, nor have any of the foregoing authorities passed upon or endorsed the merits of the Transaction or the accuracy or adequacy of this presentation. Any representation to the contrary is a criminal offence in the United States.

This presentation may contain unpublished material non-public information that is price sensitive in nature with regard to the Company and/or its securities ("inside information"). Recipients of this presentation should not deal or encourage any other any other person to deal in the securities of the Company whilst they remain in possession of such inside information. Dealing in securities of the Company when in possession of inside information could result in liability under the insider dealing restrictions set out in the UK Criminal Justice Act 1993, the UK version of the Market Abuse Regulation (2014/596/EU) which forms part of domestic law pursuant to the EUWA ("UK MAR") or other applicable laws and/or regulations in other jurisdictions. These restrictions will continue until the inside information contained in this presentation is made publicly available or is no longer material or price sensitive.

This presentation has been made available to you in electronic form. You are reminded that documents transmitted via this medium may be altered or changed during the process of electronic transmission and, consequently, none of the Company, the Broker or any of their respective Affiliates, or any other person, accepts any liability or responsibility whatsoever in respect of any difference between the version distributed to you in electronic format and the hard copy version available to you on request. Please ensure that your copy is complete. You are responsible for protecting against viruses and other destructive items.

Neither the Company's website at <https://www.mercpl.com/>, nor any website accessible by hyperlinks on the Company's website forms part of this presentation.

Any matter, claim or dispute arising out of, or in connection with, this presentation, whether contractual or non-contractual, is to be governed by and determined in accordance with English law, and the recipients, by accepting this presentation, agree that the English courts are to have exclusive jurisdiction to settle any dispute arising out of, or in connection with, this presentation.

By attending or receiving this presentation (whether electronically or in hard copy form), you irrevocably represent, warrant and undertake to the Company, the Broker that: (i) if you are in the EEA, you are a Qualified Investor; (ii) if you are in the UK, you are a Relevant Person; and (iii) you have read and agree to comply with, and be bound by, the terms of this notice, including, without limitation, the obligation to keep this presentation and its contents confidential.

Information to Distributors:

UK Product Governance Requirements: Solely for the purposes of the product governance requirements contained within the FCA Handbook Product Intervention and Product Governance Sourcebook (the "UK Product Governance Rules"), and disclaiming all and any liability, whether arising in tort, contract or otherwise, which any 'manufacturer' (for the purposes of the UK Product Governance Rules) may otherwise have with respect thereto, the Transaction have been subject to a product approval process, which has determined that such Placing Shares are: (i) compatible with an end target market of: (a) investors who meet the criteria of professional clients as defined in point (8) of Article 2(1) of Regulation (EU) No 600/2014 as it forms part of domestic law by virtue of the EUWA; (b) eligible counterparties, as defined in the FCA Handbook Conduct of Business Sourcebook ("COBS"); and (c) retail clients who do not meet the definition of professional client under (b) or eligible counterparty per (c); and (ii) eligible for distribution through all distribution channels as are permitted by Directive 2014/65/EU (the "UK Target Market Assessment"). Notwithstanding the UK Target Market Assessment, distributors should note that: the price of the Transaction may decline and investors could lose all or part of their investment; the Transaction offer no guaranteed income and no capital protection; and an investment in the Transaction is compatible only with investors who do not need a guaranteed income or capital protection, who (either alone or in conjunction with an appropriate financial or other adviser) are capable of evaluating the merits and risks of such an investment and who have sufficient resources to be able to bear any losses that may result therefrom. The UK Target Market Assessment is without prejudice to the requirements of any contractual, legal or regulatory selling restrictions in relation to the Transaction. Furthermore, it is noted that, notwithstanding the UK Target Market Assessment, the Broker will only procure investors who meet the criteria of professional clients and eligible counterparties. For the avoidance of doubt, the UK Target Market Assessment does not constitute: (a) an assessment of suitability or appropriateness for the purposes of COBS 9A and COBS 10A, respectively; or (b) a recommendation to any investor or group of investors to invest in, or purchase or take any other action whatsoever with respect to the Transaction. Each distributor is responsible for undertaking its own UK Target Market Assessment in respect of the Transaction and determining appropriate distribution channels.

EU Product Governance Requirements: Solely for the purposes of the product governance requirements contained within: (a) EU Directive 2014/65/EU on markets in financial instruments, as amended ("MiFID II"); (B) Articles 9 and 10 of Commission Delegated Directive (EU) 2017/593 supplementing MiFID II; and (c) local implementing measures (together, the "MiFID II Product Governance Requirements"), and disclaiming all and any liability, whether arising in tort, contract or otherwise, which any 'manufacturer' (for the purposes of the MiFID II Product Governance Requirements) may otherwise have with respect thereto, the Transaction have been subject to a product approval process, which has determined that such Placing Shares are: (i) compatible with an end target market of retail investors and investors who meet the criteria of professional clients and eligible counterparties, each as defined in MiFID II; and (ii) eligible for distribution through all distribution channels as are permitted by MiFID II (the "Target Market Assessment"). Notwithstanding the Target Market Assessment, distributors should note that: the price of the Transaction may decline and investors could lose all or part of their investment; the Transaction offer no guaranteed income and no capital protection; and an investment in the Transaction is compatible only with investors who do not need a guaranteed income or capital protection, who (either alone or in conjunction with an appropriate financial or other adviser) are capable of evaluating the merits and risks of such an investment and who have sufficient resources to be able to bear any losses that may result therefrom. The Target Market Assessment is without prejudice to the requirements of any contractual, legal or regulatory selling restrictions in relation to the Transaction. Furthermore, it is noted that, notwithstanding the Target Market Assessment, the Broker will only procure investors who meet the criteria of professional clients and eligible counterparties. For the avoidance of doubt, the Target Market Assessment does not constitute: (a) an assessment of suitability or appropriateness for the purposes of MiFID II; or (b) a recommendation to any investor or group of investors to invest in, or purchase or take any other action whatsoever with respect to the Transaction. Each distributor is responsible for undertaking its own target market assessment in respect of the Transaction and determining appropriate distribution channels.

SkyLifter

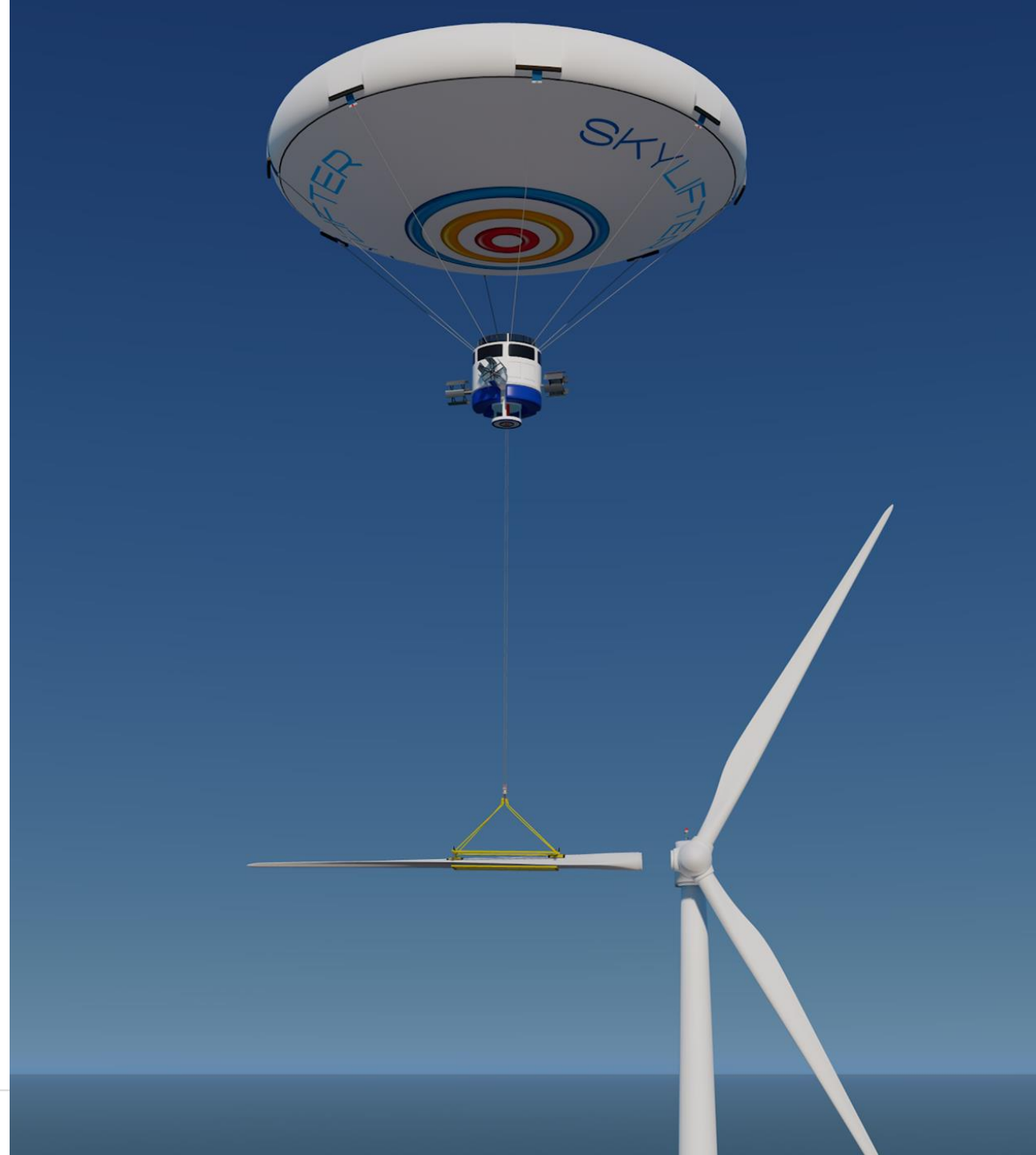
David Taylor

SKYLIFTER®



SkyLifter Air-Crane

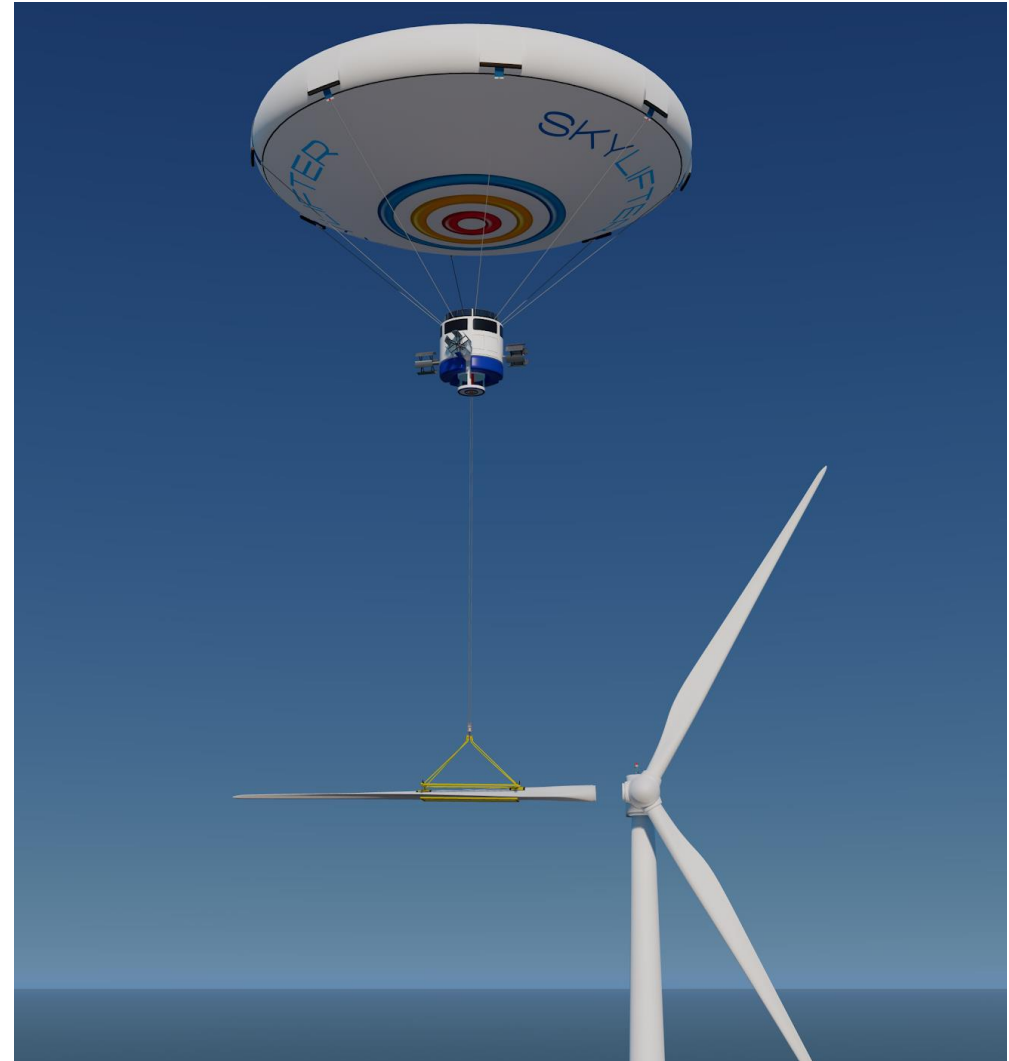
The Highly Disruptive and Game Changing Solution
to the Problem of Main Component Exchange



Investment Opportunity

- Year 10 Revenues: £1.3BN
- EBITDA £320M.
- Capital inputs (£5m, £12m, £10m)
- Profitable by Year 3
- Year 5 EBITDA > £100 million

- Design Rights, 3 Patents
- Large global export opportunity
- 300+ UK jobs



SkyLifter Design

- Aerostat, Control Pod, Winches and Hook
- Unique lens shape can move in any direction
- Changes direction instantly, holds position precisely
- Electrically powered, no CO2
- 180m diameter, low centre of gravity = stable platform and stable hook
- Unaffected by sea conditions
- Widest weather window
- 80km/h top speed, much faster than floating crane
- No height or reach limitations
- Load stabilisation, load positioning
- 2,000 km range
- Reach Hornsea 1 wind farm in 1.5 hours (120km) offshore
- Flies maintenance crews and tools to site and back.

Lowest Cost Solution to MCR



Market Traction

- Bringing together parties who will benefit from SkyLifter's availability for building, repairing and maintaining WTG offshore and help bring SkyLifter to the market
- Order queue to benefit from locked-in price
- Members to have priority call on SkyLifter availability
- High return investment opportunity



SIEMENS
Gamesa



sse
Renewables



equinor



COP
COPENHAGEN
OFFSHORE
PARTNERS



PENTLAND
FLOATING
OFFSHORE
WIND FARM



RWE



Linde

2 tonne to 250 tonne

Payloads beyond helicopters

Access anywhere, no roads, no ports

Energy

- Offshore/Onshore wind

- **Hydrogen Transportation (Euros 1.2/kg)**

Linde, Worley

Construction

- heavy-lift & logistics

Kanoo, NEOM, Ukraine reconstruction

Logistics

- cargo

- Ports, ship-to-shore

Defence

SKYLIFTER®



Thank You!

skylifter.eu

David Taylor

European Business Development Director

+44 7784 042 680

david.taylor@skylifter.eu

Nick Fothergill

Head of Corporate Finance

nick.fothergill@skylifter.eu



Ilosta

James Nash





Enhancing the Reliability of Wind Turbines

Dr James Nash, Blade Engineer
12 December 2023

MAKING GREEN ENERGY EVEN GREENER

+44 (0)7858690426

+44 (0)141 548 4130

info@ilosta.com

www.ilosta.com



Welcome To Ilosta

» Ilosta (Crack Map™) is headquartered in Glasgow, Scotland.

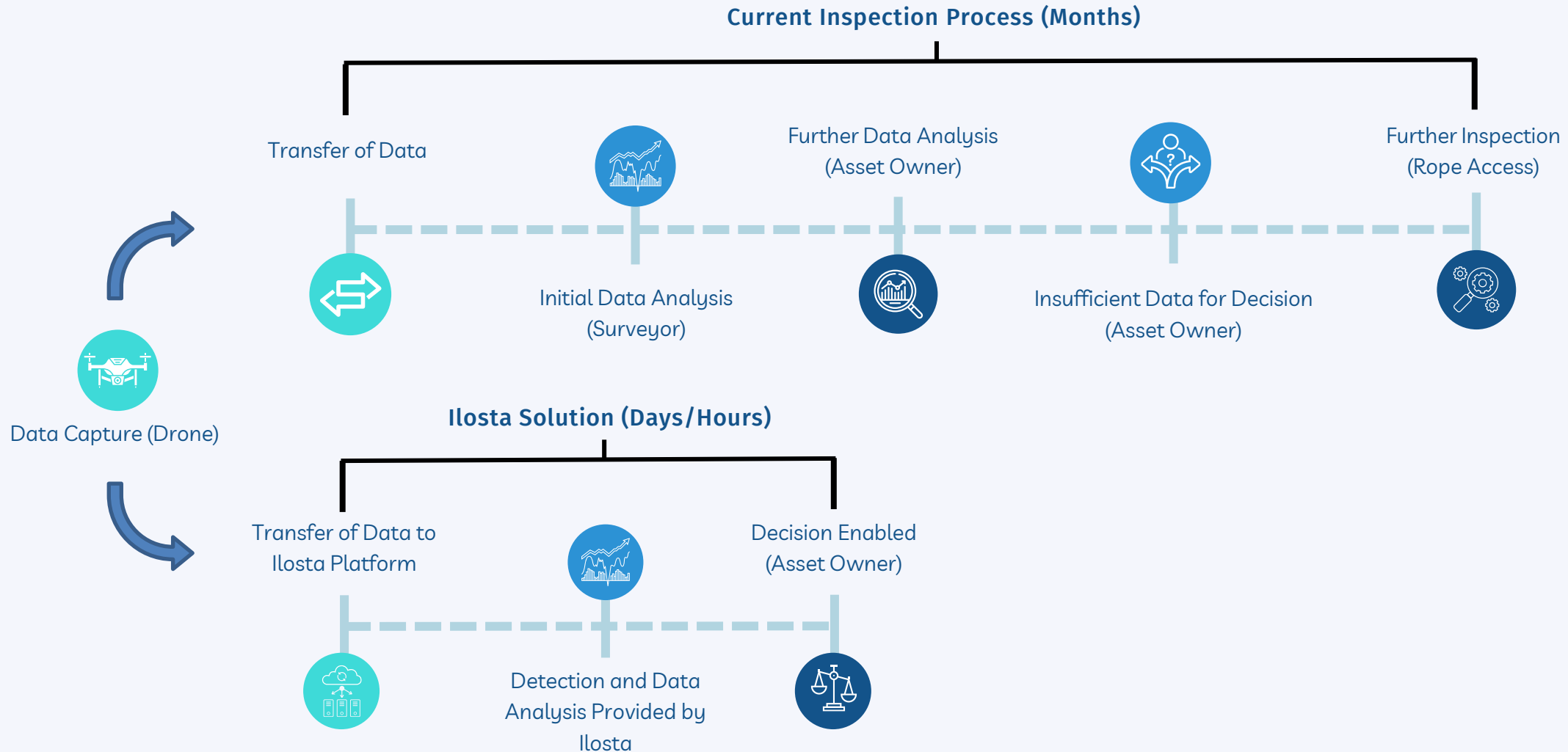
» Ilosta developed a ground-breaking technology using a physics-based AI algorithm to improve the reliability and lifespan of critical assets.

- Granted Patent
- Validated Asset Management Platform

» Our team is a group of skilled and devoted experts in the renewable energy sector, determined to create innovative and effective solutions for clients.



The Challenge



Market Size & Opportunity

Ilosta's Customers:



Inspection



Operators



Asset Owners



Insurers

Growth:

2023



11 Completed projects

2024



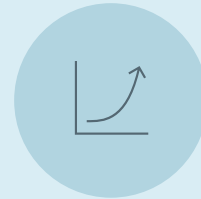
Internationalisation

2025



2 x IP / Patents

2026



+£1m Sales

£60bn

Global Multi-Sector Market

£3bn

UK Multi-Sector Market

£55m

UK Wind Turbine Analysis Market



Thank you!



info@ilosta.com



[ilosta \(Crack Map™\)](https://www.linkedin.com/company/ilosta)



www.ilosta.com



07858690426

Do you have any questions?

Kinewell Energy

Hamza Sajid





@kinewellenergy



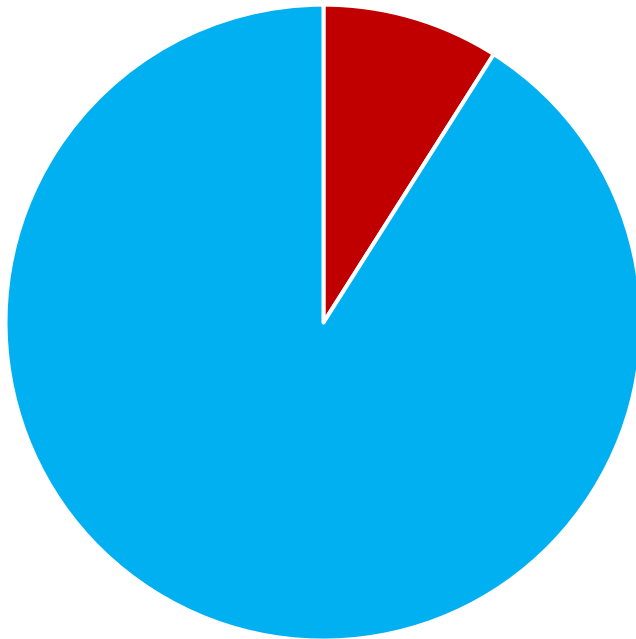
@kinewell



@kinewell-energy-ltd



World Offshore Wind



■ UK

■ Rest of the world

60 GW installed
1174 GW planned

Over next 6 years UK targets deploying 4x more than last 20 years

Over next 26 years the world targets deploying 20x more than last 20 years

Supply chain racing to create capacity



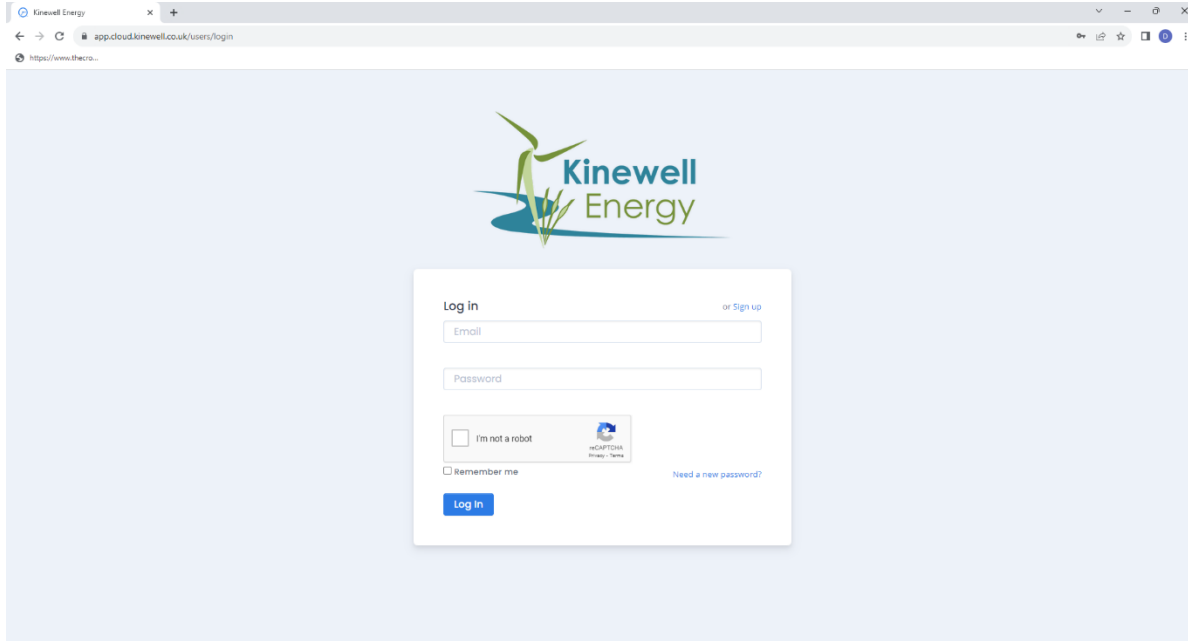
Data from:
RenewableUK
Department for Business & Trade





CONFIDENTIAL



NORTH EAST INNOVATION AWARDS 2023

Kinewell Energy



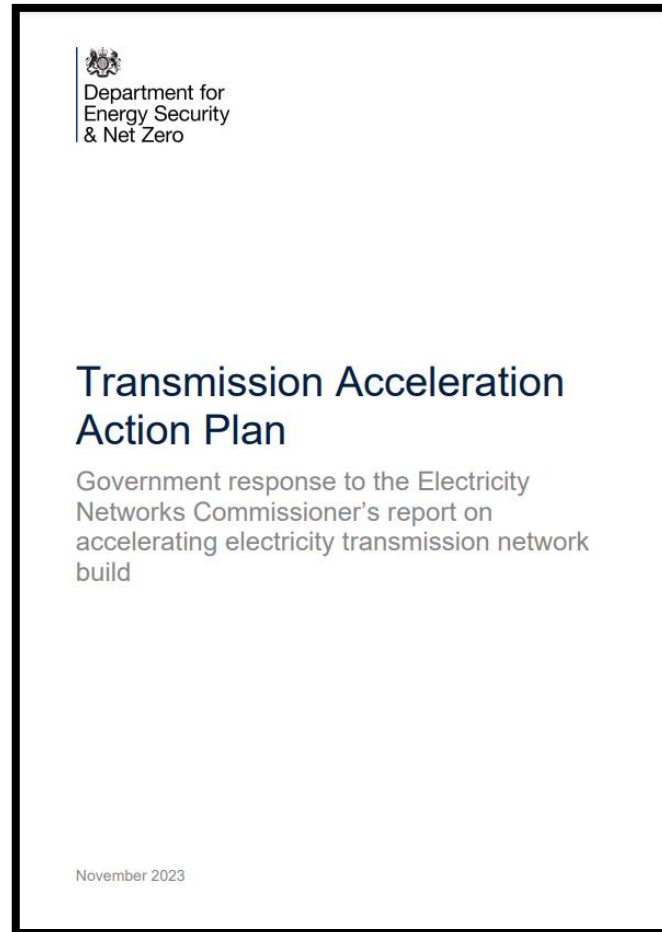
-  Optimisation as a service
-  Reduce LCoE
-  Save engineering time
-  Full training and support



CONFIDENTIAL



Autumn Statement



Recommendation AR1 advocates for design automation software to accelerate deployment



CONFIDENTIAL



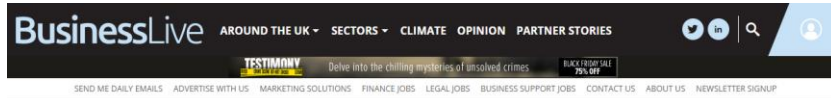
Kinewell Energy

North-East England based worldwide company



CONFIDENTIAL

Kinewell Energy 2023



Ones to Watch in 2023: the North East firms set for success in the year ahead

Each year our business writers pick five young companies we think will make the headlines in the year ahead - here are our Ones to Watch for 2023

By **Coreena Ford** Chronicle and Journal business writer & **Tom Keighley**

Bookmark   



CONFIDENTIAL

KLOC CABLE LAYOUT OPTIMISATION

**Save 20% of
cable system
CAPEX**

- Minimise CAPEX by reducing cable length
- Maximise energy yield through reduced electrical and unavailability losses

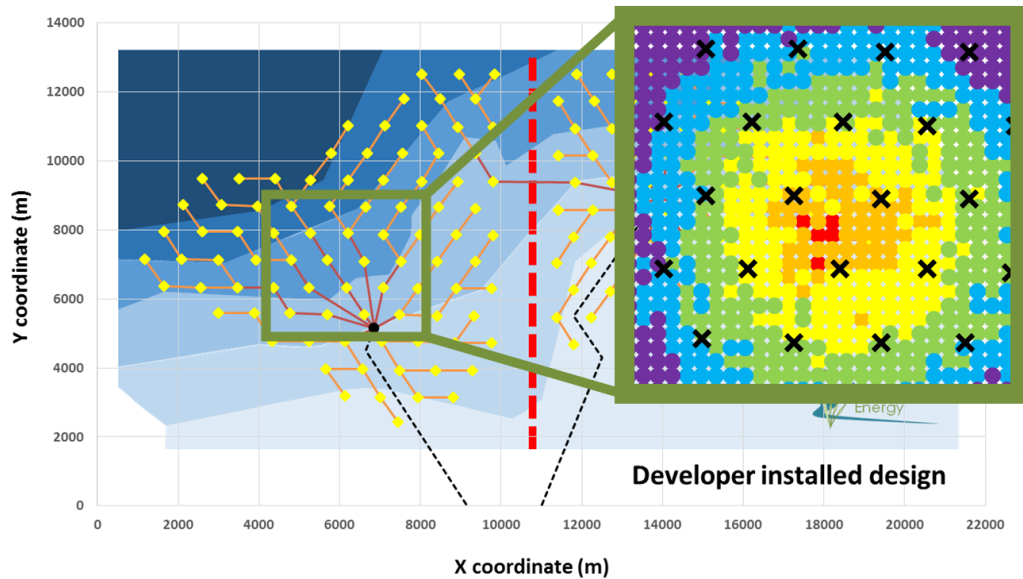


CONFIDENTIAL



NORTH EAST INNOVATION AWARDS 2023

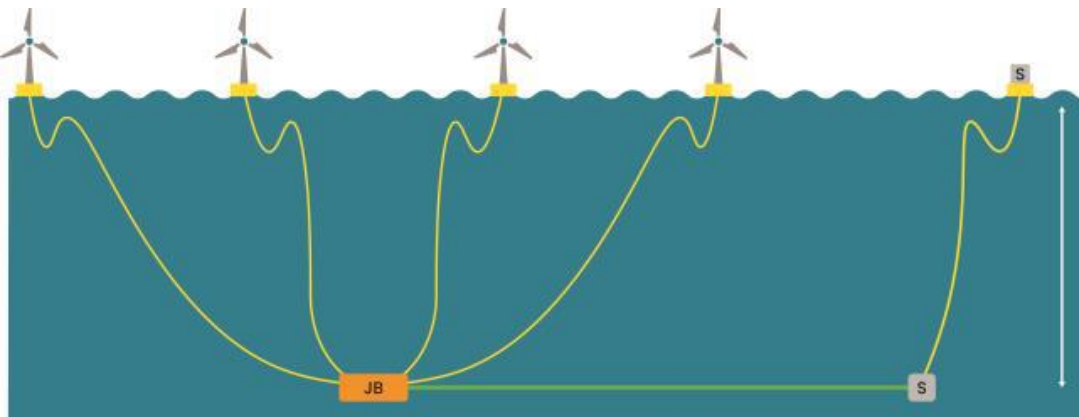
KLOC CABLE LAYOUT OPTIMISATION



- Minimise CAPEX by reducing cable length
- Maximise energy yield through reduced electrical and unavailability losses
- De-risk key decisions such as substation location

KLOC CABLE LAYOUT OPTIMISATION

- Minimise CAPEX by reducing cable length
- Maximise energy yield through reduced electrical and unavailability losses
- De-risk key decisions such as substation location
- Model dynamic cables, mooring systems and junction boxes for novel floating wind layouts

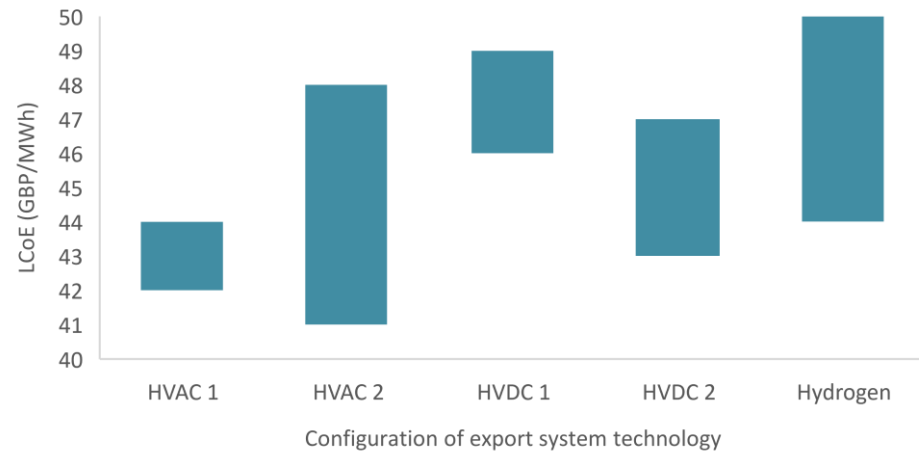


KLOC CABLE LAYOUT OPTIMISATION



- Minimise CAPEX by reducing cable length
- Maximise energy yield through reduced electrical and unavailability losses
- De-risk key decisions such as substation location
- Model dynamic cables, mooring systems and junction boxes for novel floating wind layouts
- Reduce surveying costs with better early decisions using a forecast of likely cable routes

KDOTS EXPORT SYSTEM DESIGN



Example KDOTS output showing LCoE ranges for five different export systems, where the optimal choice may vary dependent upon developer risk appetite

- Rapidly design many feasible transmission systems during early project development
- Compare electrical, hydrogen, and hybrid export system options
- Handle uncertainties robustly and make risk-informed decisions
- Reduce risk by identifying the most appropriate export system designs to progress further

KWOTA TURBINE LAYOUT OPTIMISATION



Source: <https://www.rechargenews.com> Photo credit: Vattenfall

- Maximise energy yield through reduced wake losses
- Reduce CAPEX by avoiding expensive turbine installation locations
- De-risk key decisions like turbine types and overplanting
- Suitable for all offshore wind markets, including the US pre-defined turbine location grids

Business model

- SaaS – giving scalable reach and impact
- Leveraging innovation funding to grow rapidly
- Highly disruptive
- Financially sustainable business
- Revenue & team doubling roughly every year
- Current recruiting – to apply, visit:
<https://kinewell.co.uk/recruitment/>



CONFIDENTIAL



NORTH EAST INNOVATION AWARDS 2023

 @kinewellenergy

 @kinewell

 @kinewell-energy-ltd

**Talk to us to discuss our SaaS solutions
or to collaborate**

hamza.sajid@kinewell.co.uk



CONFIDENTIAL



PLEASE MAKE YOUR WAY TO THE PENTLAND SUITE NOW

Up Next – Session 4
14.00 – 14.45



Partners in UK offshore wind



DRINKS RECEPTION

Feel free to join us in the Strathblane
Exhibition Hall for refreshments